

CS 3500/CS 3600 Intraoral Scanners Improving Dentist-Lab Relationships through Digital Technology

Laboratoire Beaupère—located in Quincy-Voisins, right outside of Paris—specializes in aesthetic implant prosthetics (such as immediate loading and definitive restorations). Comprised of a staff of eight, the lab works with a number of implant brands, including Nobel Biocare, MIS Implant and Zimmer, and is equipped with Amann Girrbach milling and an NX3 Novux 3D Printer.



Moving to Digital

While Laboratoire Beaupère works with a number of practices that are still using traditional impressions, they recognized the need to adapt to emerging technology, such as computer-aided design/computer-aided manufacturing (CAD/CAM).

“Digital is the future, and we cannot avoid it,” said Clément Simonin, CAD/CAM department manager. “Traditional currently represents 20 percent of our business, but CAD/CAM is 80 percent and growing. It is sometimes necessary to use 3D printer in some cases (anterior) as we have to layer the elements.”

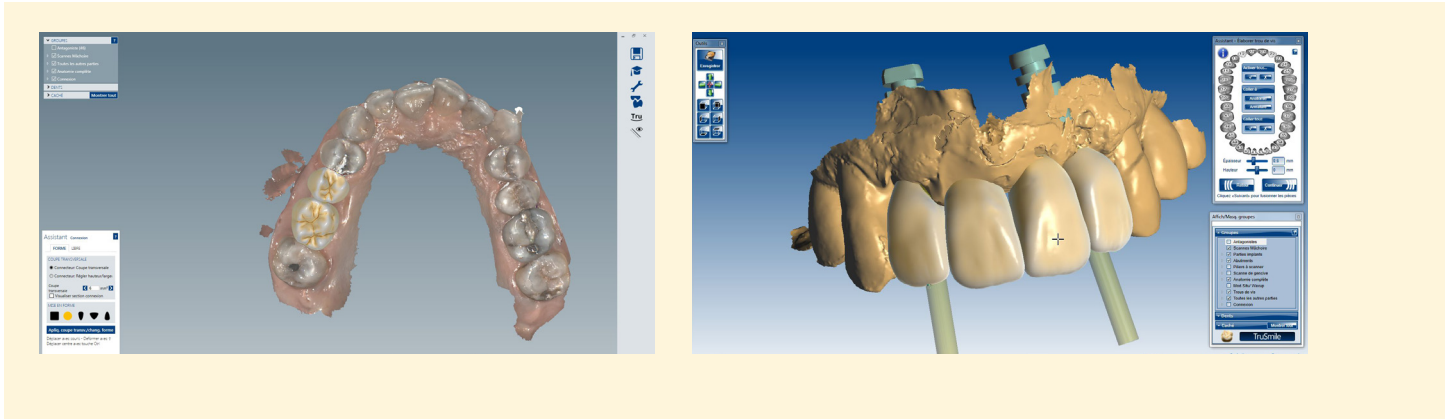
Upon implementing CAD/CAM into their laboratory, the staff at Laboratoire Beaupère found that CAD/CAM has a number of advantages over traditional methods: it is more precise, produces less failures, is almost 99 percent accurate and is three times faster to produce. In addition, the staff is better able to communicate with doctors via email than they were before. Other benefits include:

- Improved quality of life
- Profitability
- Better cost management
- Evolution of new materials

Clinical Case Study

Although the number of customers who send files digitally is small at the moment (5 percent of their dental customers in one year), Franck Beaupère, lab owner, said “They [the clients] are very happy with the results.”

Choosing a CAD/CAM Partner



When Laboratoire Beaupère began implementing CAD/CAM technology, they worked with several different manufacturers. The first company they chose caused a number of problems due to licenses and the need to convert files to STL format. In addition, the manufacturer required the lab to be fully equipped with its system—essentially tying them down to one company. They tried a second system, and experienced even more problems. Finally, the lab found success when it began working with Carestream Dental and using its CS 3500 intraoral scanner.

One concern facing many labs when switching to digital is a possible financial burden. There are a number of intraoral scanner manufacturers that work as part of a closed system—and require significant licensing fees for dental laboratories. However, the CS 3500 is part of an open system; meaning dentists can send their impressions to any lab of their choice. This enables Laboratoire Beaupère to accept Carestream Dental’s files without paying any license costs.

“With Carestream Dental’s CS 3500 intraoral scanner, we had no problem importing the data, and the images produced were good quality for the mesh,” said Clément Simonin. “We were able to reduce the number of problems we had when it came to the precision of the images with the CS 3500.”

In addition to the quality of the digital impressions captured on the CS 3500, Laboratoire Beaupère also experienced improvements to their digital workflow when working with Carestream Dental.

Clinical Case Study

“The fact that the CS 3500 captures impressions in STL format has made our workflow easier,” said Clément Simonin. “In addition, it’s possible to re-import the raw data to the dentist to rescan an area if any information was missing.”

Other features, such as being able to capture images in PLY format for use with exocad as well as a mesh viewer to see the margin line in HD 3D, have also streamlined the lab’s workflow. Because of this, the lab is now able to propose additional products to customers, including Full Zirconia, Zirconia FX and titanium.

Overall, using CAD/CAM technology—and working with Carestream Dental—has been beneficial to the lab.

“We have no negative feedback from our customers, our communication with doctors has improved and we have almost no need to rework what is produced.”

About Laboratoire Beaupère



Lab Franck Beaupère is based in Seine & Marne, close to Paris. Their specialties include aesthetic compound prosthetics, prosthetic on standard abutments and customized abutments and cemented or screw-retained implants.

The lab is equipped with the latest CAD/CAM technologies for digitalization as well for milling and printing.

Franck Beaupère is also highly sought out as a speaker on CAD/CAM technology and immediate loading in an implant workflow.

Laboratoire Beaupère is :

Laboratoires AG live lab AMANN GIRRBACH
Lab Ambassador NOVUX
Training Center : CFAONE



To learn how Carestream Dental’s innovative intraoral scanners help labs and doctors better communicate, visit carestreamdental.com.