

Extraoral Cassettes



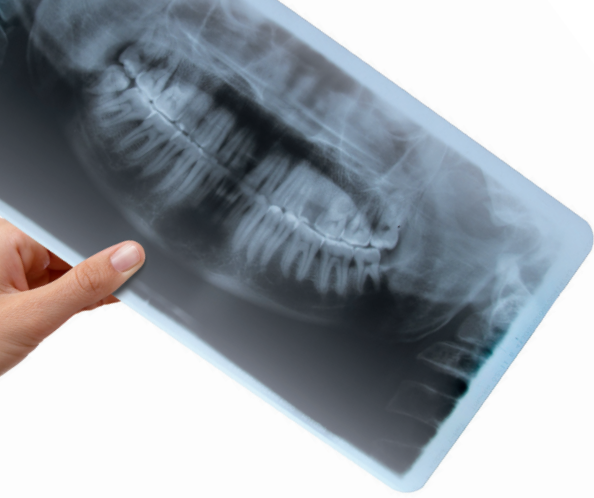
## KODAK Cassettes for Extraoral Imaging

Carestream Dental, the exclusive manufacturer of Kodak dental systems, now offers two convenient cassette options to meet your extraoral imaging needs.



### Superb image quality

Both Kodak X-Omat and Kodak extraoral cassettes complement Kodak Ektavision and Lanex screens for the highest-quality images each and every time.



## KODAK X-OMAT Cassette

### Premium quality for precision and ease of use

Featuring high-quality construction based on years of success in dental practices worldwide, Kodak X-Omat cassettes deliver the performance characteristics you would expect from the leader in imaging technology.

Features include:

- Single latch opening and closing for ease of use
- Curved panels designed to force out trapped air providing unsurpassed screen/film contact
- Robust construction to withstand rough handling for long life
- Lead shielding to reduce backscatter for sharper images
- Low-absorption front panel for reduced patient exposure
- Light weight construction
- Available with multiple Kodak intensifying screens to meet your imaging needs



Our premium cassette



Our new value cassette

## KODAK Extraoral Cassette

### Exceptional quality and value

Kodak extraoral cassettes provide the perfect mix of value and performance to help you capture high quality images at a surprisingly affordable price.

Features include:

- Double latch opening and closing
- Uniform screen/film contact from specially designed back panel and fitted foam lining
- Standard quality construction
- Lead shielding to reduce backscatter for sharper images
- Available with multiple Kodak intensifying screens to meet your imaging needs

## Ordering Information

Size	with KODAK EKTAVISION screens	with KODAK LANEX regular screens	with KODAK LANEX medium screens
<b>KODAK X-OMAT Cassettes</b>			
15 x 30 cm	165 5349	850 4706	842 4806
8 in x 10 in	194 4297	878 2872	861 4380
<b>KODAK Extraoral Cassettes</b>			
15 x 30 cm	100 2732	100 2773	100 2740
8 in x 10 in	100 2781	100 2807	Not available

For more information, call **800-933-8031** or visit **www.carestreamdental.com**.



Carestream Dental

© Carestream Health, Inc. 2011. The Kodak trademark and trade dress are used under license from Kodak. X-Omat and Lanex are trademarks of Carestream Health. Ektavision is a trademark of Kodak used under license.