

Logicon Caries Detector



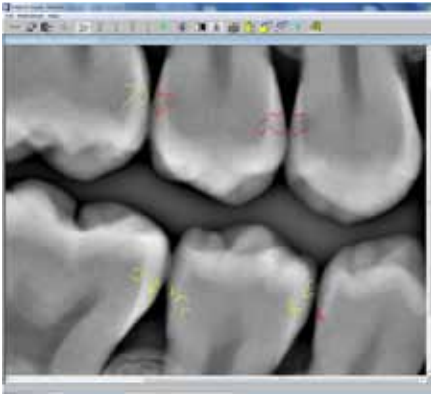
Logicon caries detector™ software is a unique and clinically proven* tool that helps you detect and treat interproximal caries at an early stage, enabling minimally invasive treatments. With one click, Logicon automatically scans all proximal surfaces in a bitewing radiograph and gives you a preview of the patient's state of proximal caries.



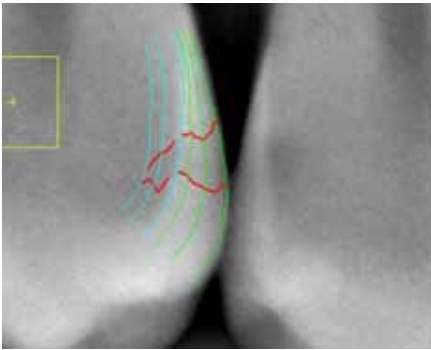
Improved Patient Care

An optional component with RVG digital radiography systems, Logicon is a computer-aided-detection tool that provides dentists an important decision-support instrument for better patient care. Logicon provides an electronic second opinion by analyzing tooth density and demineralization patterns for interproximal caries to help you search for caries and determine whether they exist in the enamel or dentin. The program also uses dramatic graphics and visual aids to help you communicate your diagnosis to patients in a way they can easily understand – so they are more likely to accept your treatment recommendations.

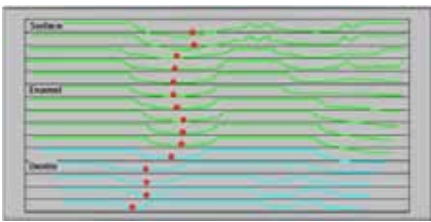
*Gakenheimer, David C. "The Efficacy of a Computerized Caries Detector in Intraoral Digital Radiography". Journal of the American Dental Association 133 (2002): 883-890



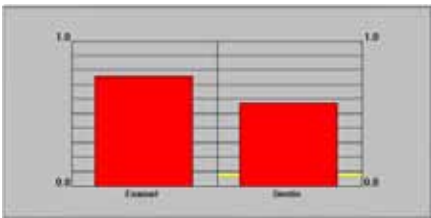
Automatically scans all proximal surfaces in a bitewing radiograph with one click



Close up of decay pattern



Density changes across decay site



Probability decay present with decision threshold

Reveal Invisible Caries

Diagnose More Caries with Confidence

Logicon analyzes shades of gray (many more than the human eye can resolve), extracts caries related image features and correlates them with a database of known caries problems. In doing so, the software automatically highlights possible abnormalities on digital dental radiographs that otherwise might be missed, signaling the dentist to take a closer look at the tooth and surface involved.

How It Works

Logicon uses detection algorithms based on laboratory data produced in association with a leading school of dentistry. With one click Logicon scans all the proximal surfaces in a radiograph and highlights the decay sites on all of the teeth in one picture for quick review. Detailed information about the change in tooth density and lesion probability are saved for each surface and can be retrieved in graphical format.

90% Success Rate*

A clinical study showed that Logicon enabled dentists to find 20% more cases of caries penetrating into the dentin in permanent teeth than they were able to find visually without this software, with a true positive dentinal caries detection rate of 90%.

Key Functions

- New Autoscan feature automatically scans all proximal surfaces in a bitewing radiograph and gives you a preview of the patient's state of proximal caries
- Edge finding algorithms help reduce the need for manual tracing of the tooth edge and DEJ (Dentoenamel Junction)
- Region of Interest (ROI) Adjustment Tool automatically searches to find the maximum caries depth
- Zoom Tool allows the practitioner to focus in and out on the tooth surface at any time
- Full Screen Filters allow for the adjustment of contrast, brightness and sharpness to help provide more visual evidence of caries to correlate with the analysis
- Saves PreScan results automatically with the radiograph
- Image markers point out the different surfaces that have been previously analyzed and saved for comparison over time
- E-mail function allows the transfer of Logicon results to third parties, and allow you to obtain Site Keys via email
- Interactive Training Wizard and Easy Steps files help you get started
- Available on every workstation, comprehensive training files with audio tracks are included with the software and include slide shows of example diagnoses

Would you like to know more? Visit www.carestreamdental.com or call us today at 800.944.6365.