

OL200-06

KODAK WINOMS CS Practice Management Software

Installation Guide

Notice

© PracticeWorks Systems, LLC, 2009. No part of this publication may be reproduced, stored in a retrieval system, translated to another language, or transmitted in any form by any means, electronic, mechanical, photocopied, recorded, or otherwise, without prior written permission.

NEITHER PRACTICEWORKS SYSTEMS, LLC NOR ITS PARENTS OR ANY OF ITS SUBSIDIARIES MAKES ANY WARRANTY OF ANY KIND WITH RESPECT TO THIS MATERIAL INCLUDING, BUT NOT LIMITED TO, THE IMPLIED WARRANTIES OF MERCHANTABILITY, NONINFRINGEMENT, AND FITNESS FOR A PARTICULAR PURPOSE.

The information in this document is subject to change. Neither PracticeWorks Systems, LLC nor its parents or any of its subsidiaries shall be liable for errors contained herein or for incidental damages in conjunction with the furnishing, performance, or use of this material.

WinOMS is a trademark of Carestream Health, Inc.

The Kodak trademark and trade dress are used under license from Kodak.

All other trademarks and registered trademarks are the property of their respective holders.

Current Dental Terminology (CDT) © American Dental Association (ADA). All rights reserved.

Manual Name: KODAK WINOMS CS Practice Management Software Installation Guide

Part Number: OL200

Revision Number: 06

Print Date: December 2009

The names of persons and the data reflected in this guide are fictitious and are not intended to represent any real individual, event, or condition. Any resemblance or similarity of the names of persons or data reflected in this guide to any actual person's name or any event or condition is purely coincidental and unintended.

Contents

Accessing This Guide Electronically	1
Getting Started	2
Accessing Online Help	2
Performing an Upgrade.	2
Upgrading the WINOMS CS Software on the Server	3
Upgrading the WINOMS CS Software on a Workstation	7
Performing a New Installation	9
Installing the WINOMS CS Software on the Server	9
Creating a Database Service	14
Installing the WINOMS CS Software on a Workstation	17

Installation

This guide describes the process for first-time Kodak WinOMS CS practice management software installations and for updating existing installations to version 8.1 of the WinOMS CS software. Read this document carefully before installing the new software.

If you are performing an upgrade to your existing software, follow the procedure on [page 2](#). If you are performing a new installation, follow the procedure on [page 9](#).

Accessing This Guide Electronically

When you install the WinOMS CS software, electronic versions of this guide and other related documentation are installed on your computer.

To access the electronic documents, follow these steps:

- 1 Click **Start** on your Microsoft Windows taskbar.
- 2 Select **Programs > WinOMS CS > Online Documentation**.
- 3 Select a document from the drop-down list.

The electronic documents are in PDF file format and can be opened with Adobe Reader. If Adobe Reader is not installed on your computer, follow these steps:

- 1 Click **Start** on your Microsoft Windows taskbar.
- 2 Select **Programs > WinOMS CS > Online Documentation > Install Adobe Reader**.
- 3 Follow the onscreen instructions to install the software



Important: Each time you install an update of this software, the online documentation folder is deleted and replaced with a folder containing the latest versions of online documentation. Do not store important files in this folder.

Getting Started

Before installing the software, ensure that each computer in your network meets the minimum system requirements. For more information on system requirements, see the System Requirements document shipped with your software.



Important: Kodak WinOMS CS practice management software, version 8.1 only runs on the Windows 2000, Windows XP, and Windows Vista operating systems.

A DVD drive is required to install this software. The drive can be located on any computer in the network. If you do not have a DVD drive on a particular computer in your network, you can share the drive from another computer.

To optimize your use of the WinOMS CS software, it is recommended that you set your screen resolution to 1280 x 1024. The minimum required resolution is 1024 x 768.

Before loading the WinOMS CS software, review this installation guide and shut down all workstations.



Important: Before installing the WinOMS CS software, it is strongly recommended that you run a daily backup of any important data.

Accessing Online Help

To access the Microsoft Windows operating system online help, select **Start > Help and Support** from your Windows taskbar. To access the WinOMS CS online help after the software is installed, select **Help > WinOMS CS Help** from the main menu.

Performing an Upgrade

An upgrade installation updates existing files, adds new files, and removes outdated WinOMS CS software files on the hard drive of your server. An upgrade also updates your Sybase Database Engine to version 9.0. An upgrade installation does not overwrite existing WinOMS CS software data.

The WinOMS CS software must be updated on your server and on each workstation in your network. You must update the server before you update workstations.



Important: Before upgrading the server, it is strongly recommended that you make a backup of your WinOMS CS system and any other important data.

Upgrading the WINOMS CS Software on the Server

Before you begin the upgrade, make sure the **winomscs** folder on your server is a shared folder with full read and write permission. See the documentation and online Help provided with your Windows operating system for more information on sharing.

To update the WinOMS CS software on the server, follow these steps:

- 1 Shut down all workstations in your network. Alert all users to refrain from using WinOMS CS software until the installation is complete.
- 2 Ensure that your Sybase database service is running as usual. Verify that all other programs on the server are closed.



Important: Do not install the WinOMS CS software onto a server machine using the Windows Vista operating system.

- 3 Insert the WinOMS CS software DVD in the DVD drive. Wait 10 to 20 seconds for the update to begin. The **WinOMS CS Installer Menu** is displayed.



Figure 1 WinOMS CS Installer Menu

If this window is not displayed, begin the installation by selecting **Start > Run** from the Windows taskbar and typing **D:\WinOMSIInstMenu.exe**. If your DVD drive is assigned a different letter, substitute that letter for **D**.



Note: The installer checks the computer for the Microsoft .NET Framework 3.5 Service Pack 1 (SP1). If these files are present, the installation proceeds as usual. If not, the installation of SP1 proceeds automatically. After SP1 is installed, you are prompted to restart the computer. If the WinOMS CS installation does not continue after you restart, repeat Step 3.

- Click **Install WinOMS CS v8.1**. The **Select Component** window is displayed.

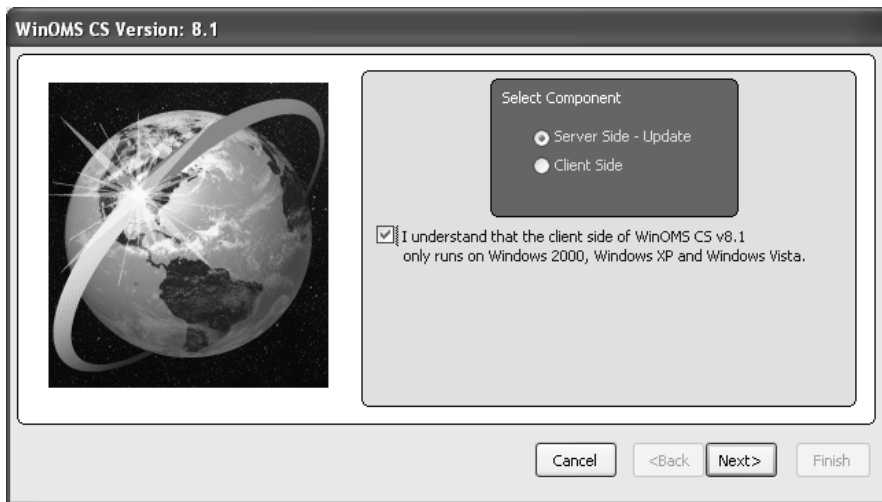


Figure 2 Select Component Window

- By default, **Server Side - Update** is selected. Select **I understand that the client side of WinOMS CS v8.1 only runs on Windows 2000, Windows XP, and Windows Vista**, and click **Next**. The **Server Data Drive** window is displayed.

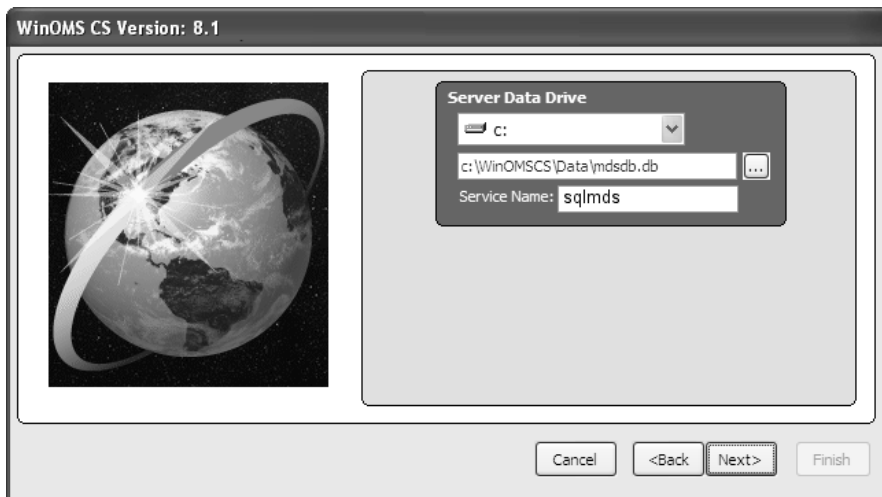


Figure 3 Server Data Drive Window

- Verify the information in this window. To change the **Server Data Drive** field, click the arrow and select a drive letter from the drop-down list. To change the path, click the ellipse button and navigate to the location of your WinOMS CS software database.

The **Service Name** field defaults to **sqlmds**. If this is not correct, edit this field to match the name of your Sybase database service.

- 7 Click **Next**. The **Automatic Administrator Log-in Settings** window is displayed.



Important: If you are upgrading from a version of the WinOMS CS software prior to version 6.0, the **Sybase OEM Network Database Server - Welcome** window is displayed. Follow the instructions in the “[Installing the WINOMS CS Software on the Server](#)” section, step 12 on page 12.

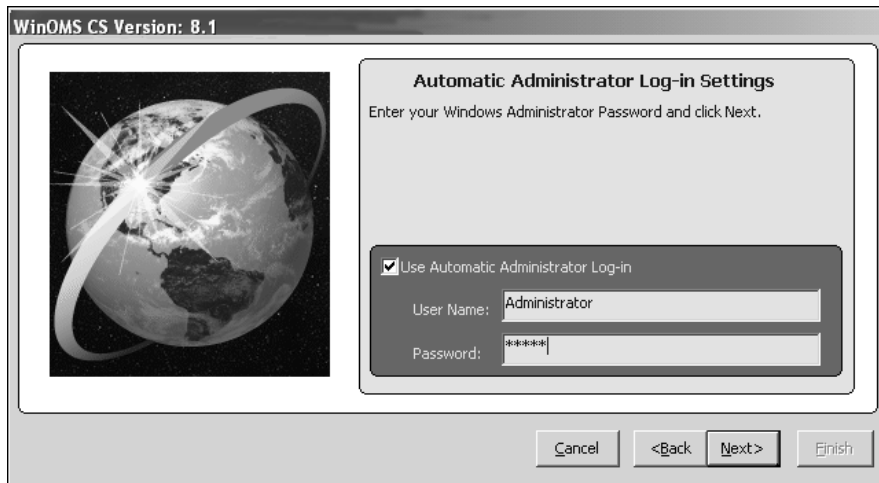


Figure 4 Automatic Administrator Log-in Settings Window

By default, the **Use Automatic Administrator Log-in** checkbox is selected.



Note: If you do not want to take advantage of the Automatic Administrator Log-in feature, you must manually log in to your server to run WinOMS CS software.

- 8 The **User Name** field defaults to the Windows login name you used to log into the server. Enter the corresponding Windows login password. The user name must have administrator privileges.
- 9 Click **Next**. The **WinOMS CS Version 8.1 Update** window is displayed, instructing you to make sure all users are logged off of the software before continuing.
- 10 Click **Finish**. The **Status of WinOMS CS 8.1 Server Update** window is displayed, then the **Release Code** window is displayed.



Note: The **Release Code** window is only displayed when you are upgrading to the next major release, such as from 7.0 to 8.0.

- 11 Select a method for retrieving your release code:
 - Automatically via the Internet
 - Contact support by telephone
- 12 Click **OK**. The **Release Code** window is displayed, prompting you to enter your code.

- 13 Enter the code in the **Release Code** field and click **OK**.

If you are updating from a version of WinOMS CS software prior to version 6.0, the **Install License File** window is displayed. Continue with step 14.

If you are updating from WinOMS CS software, version 6.0 or later, skip to step 17.

- 14 Insert the license file floppy diskette and click **OK**. The **Registration - New** window is displayed.

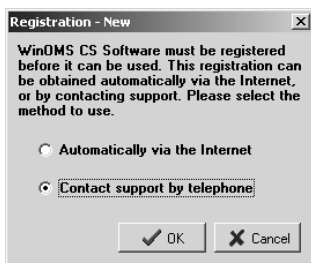


Figure 5 Registration - New Window

- 15 Select a method for retrieving your registration code:


- Automatically via the Internet
- Contact support by telephone

- 16 Click **OK**. If you selected the **Contact support by telephone** option, the **Registration - New** window is displayed, prompting you to enter your code.



Figure 6 Registration - New Window

Enter the code in the **Registration Code** field and click **OK**.



Note: If you are unable to register your software at this time, click **Cancel** to continue with the update. You have seven days to register your product.

The **Status of WinOMS CS 8.1 Server Update** window is displayed again, indicating the progress of the installation. A message is displayed to inform you that the server installation is complete.

- 17 Click **OK**, and then click **Exit**. You can now update the software on your workstations. See [“Upgrading the WINOMS CS Software on a Workstation”](#) on page 7.

Upgrading the WINOMS CS Software on a Workstation



Note: You must complete the server installation before you can install the WinOMS CS software on a workstation.

To update the WinOMS CS software on a workstation, follow these steps:

- 1 Insert the WinOMS CS software DVD in the DVD drive. Wait 10 to 20 seconds for the update to begin. The **WinOMS CS Installer Menu** is displayed.



Figure 7 WinOMS CS Installer Menu

If this window is not displayed, begin the installation by selecting **Start > Run** from the Windows taskbar and typing **D:\WinOMSInstMenu.exe**. If your DVD drive is assigned a different letter, substitute that letter for **D**.



Note: The installer checks the computer for the Microsoft .NET Framework 3.5 Service Pack 1 (SP1). If these files are present, the installation proceeds as usual. If not, the installation of SP1 proceeds automatically. After SP1 is installed, you are prompted to restart the computer. If the WinOMS CS installation does not continue after you restart, repeat Step 1.

- 2 Click **Install WinOMS CS v8.1**. The **Select Component** window is displayed.

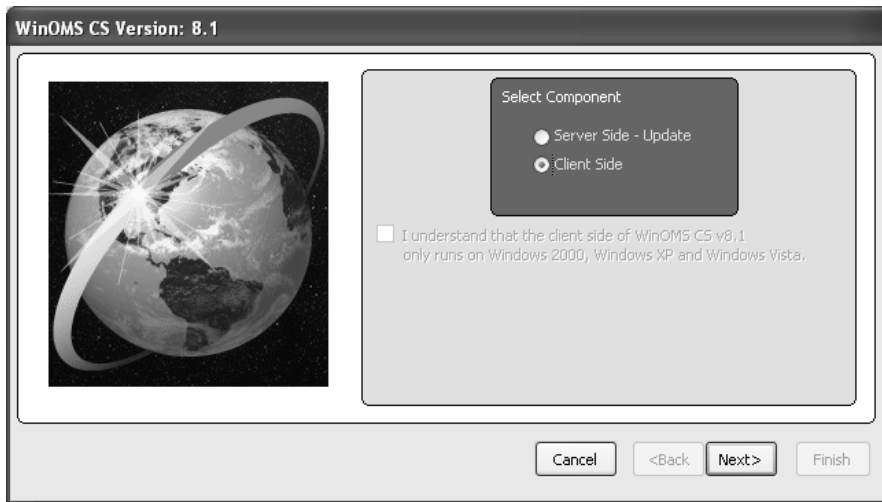


Figure 8 Select Component Window

- 3 By default, **Client Side** is selected. Click **Next**. The **Target Directory** window is displayed.

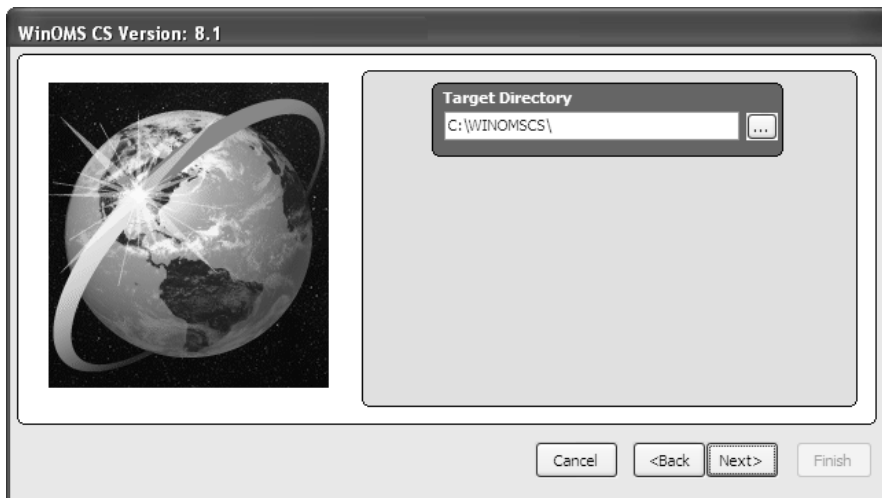


Figure 9 Target Directory Window

- 4 The target directory is the location where the update should be installed. If the default target directory is incorrect, edit the path and click **Next**. The **WinOMS CS Version 8.1 Update** window is displayed, informing you that the software is ready to be installed.



Important: Repeat these steps to update the WinOMS CS software on each computer in your network.

Click **Finish**. The **Status of WinOMS CS 8.1 Client Update** window is displayed. When the installation is complete, a message is displayed.

- 5 Click **OK**, and then click **Exit**.



Note: If you are upgrading from a version of the WinOMS CS software prior to version 6.0, the **Sybase Client Drivers** window is displayed during the client installation. Follow the instructions on the window to click **Next** and **Finish** at the appropriate times.

Performing a New Installation

This section explains the procedures for installing the WinOMS CS software, version 8.1. The installation process for new users must take place in the following order:

- Install the WinOMS CS software on the server.
- Install the WinOMS CS software on the workstations.



Note: The server installation requires the license disk included with your WinOMS CS software.

Installing the WINOMS CS Software on the Server

During a new installation, WinOMS CS software files are copied to the hard drive of your server. A new installation also installs the Sybase Network Database Server, version 9.0, on your server.

To install the WinOMS CS software on the server, follow these steps:

- 1 Shut down all workstations in your network and close all programs on the server.



Important: Do not install the WinOMS CS software onto a server machine using the Windows Vista operating system.

- 2 Insert the WinOMS CS software DVD in the DVD drive on the server. Wait 10 to 20 seconds for the installation to begin. The **WinOMS CS Installer Menu** is displayed.



Figure 10 WinOMS CS Installer Menu

If this window is not displayed, begin the installation by selecting **Start > Run** from the Windows taskbar and typing **D:\WinOMSInstMenu.exe**. If your DVD drive is assigned a different letter, substitute that letter for **D**.



Note: The installer checks the computer for the Microsoft .NET Framework 3.5 Service Pack 1 (SP1). If these files are present, the installation proceeds as usual. If not, the installation of SP1 proceeds automatically. After SP1 is installed, you are prompted to restart the computer. If the WinOMS CS installation does not continue after you restart, repeat Step 2.

- 3 Click **Install WinOMS CS v8.1**. The **Select Component** window is displayed.

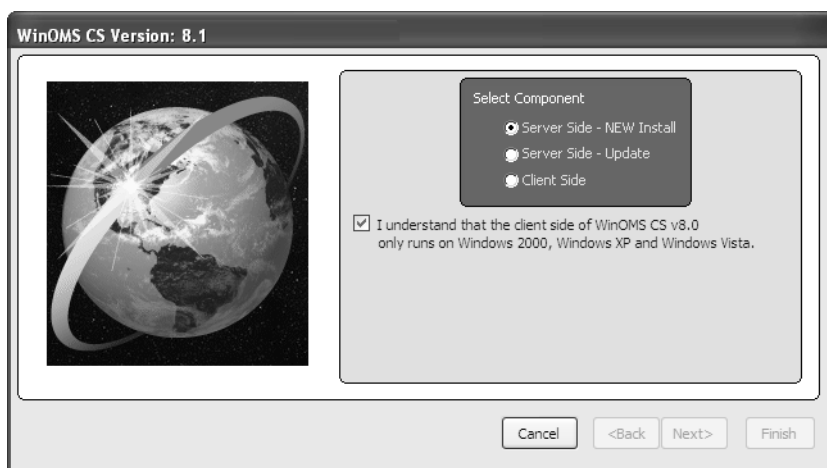


Figure 11 Select Component Window

- 4 Select **Server Side - NEW Install**, select **I understand that the client side of WinOMS CS v8.1 only runs on Windows 2000, Windows XP and Windows Vista**, and click **Next**. The **Server Data Drive** window is displayed.

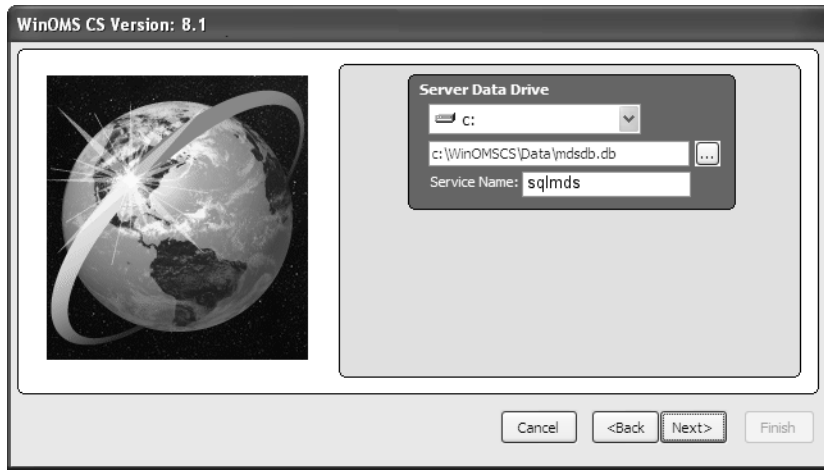


Figure 12 Server Data Drive Window

- 5 Verify the information in this window. To change the **Server Data Drive** field, click the arrow and select the correct drive letter from the drop-down list. The **Service Name** field defaults to **sqlmids**. It is recommended that you accept the default service name.
- 6 Click **Next**. The **Automatic Administrator Log-in Settings** window is displayed.

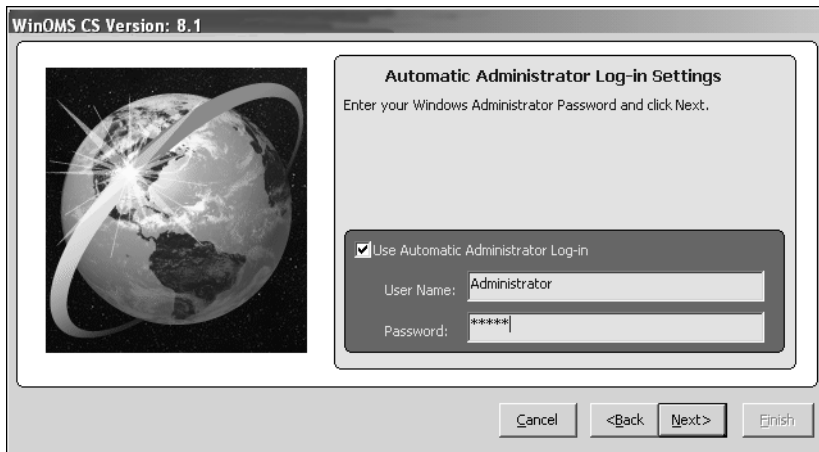


Figure 13 Automatic Administrator Log-in Settings Window

The **Use Automatic Administrator Log-in** checkbox is selected by default.



Note: The user name must have administrator privileges. If you do not want to take advantage of the Automatic Administrator Log-in feature, you must manually log into your server to run the WinOMS CS software.

- 7 The **User Name** field defaults to the Windows login name you used to log into the server. Enter the corresponding Windows login password.
- 8 Click **Next**. A window is displayed, informing you that the software is ready to be installed.
- 9 Click **Finish**. A message window is displayed informing you that the install folder needs to be shared so that all users have full access.
- 10 Navigate to the **WINOMSCS** folder on your server. Share the folder with full read and write permissions.



Note: See the documentation and online Help provided with your Windows operating system for more information on sharing.

- 11 Return to the message and click **OK**. The **Sybase OEM Network Database Server - Welcome** window is displayed.
- 12 Read the information on the **Welcome** window and click **Next**. The **Sybase OEM Network Database Server - Select Components** window is displayed.

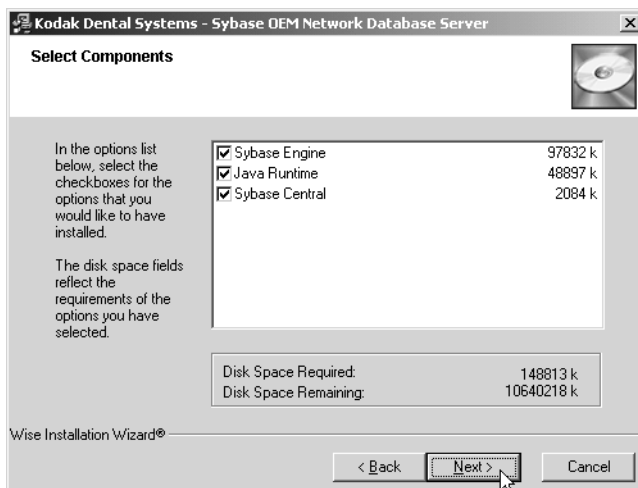


Figure 14 Sybase OEM Network Database Server - Select Components Window

- 13 By default, all Sybase components are selected. Do not change these selections. Click **Next**. The **Sybase OEM Network Database Server - Start Installation** window is displayed.
- 14 Click **Next**. The **Sybase OEM Network Database Server** window displays the progress of the installation. This window remains open during the Sybase installation and informs you when the installation is complete.
- 15 Click **Finish**. A message is displayed, informing you that the computer must be restarted.

- 16 Click **OK**. The system is restarted, and the installation continues automatically. The **Status Messages** window is displayed to inform you that the installation has resumed, and then the **Install License File** window is displayed.

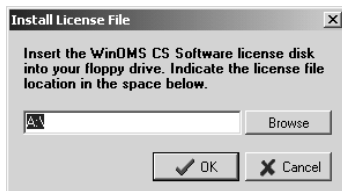


Figure 15 Install License File Window

- 17 Insert the license file floppy diskette and click **OK**. The **Registration - New** window is displayed.

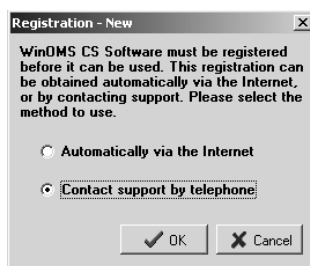



Figure 16 Registration - New Window

- 18 Select a method for retrieving your registration code:
- Automatically via the Internet
 - Contact support by telephone
- 19 Click **OK**. If you selected the **Contact support by telephone** option, the **Registration - New** window is displayed, prompting you to enter your code.



Figure 17 Registration - New Window

 **Note:** If you are unable to register your software at this time, click **Cancel** to continue with the update. You have seven days to register your product.

The **Status Messages** window is displayed again, indicating the progress of the installation. A message is displayed to inform you that the server installation is complete.

- 20 Click **OK**, and then click **Exit**. You can now install the software on your workstations. See “Installing the WINOMS CS Software on a Workstation” on page 17.

Creating a Database Service

After installing the WinOMS CS software on your server, you must create a database service in Sybase central.

To create a database service, follow these steps:

- 1 From your Windows desktop, double-click the **Sybase Central** icon. The **Sybase Central** window is displayed.

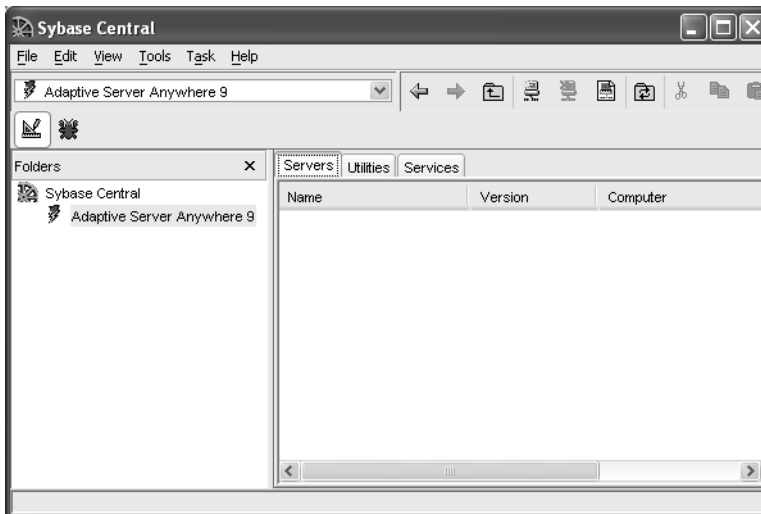


Figure 18 Sybase Central Window



New Services Button

- 2 Click **Adaptive Server Anywhere 9** in the folders list and then click the **Services** tab in the right pane. The **New Services** button is displayed above the **Folders** list.

- 3 Click the **New Services** button, and the **Create a New Service** wizard is displayed.



Figure 19 Create a New Service Wizard Window

- 4 Type **SQLMDS** in the field and click **Next**. You are prompted to select a service type.

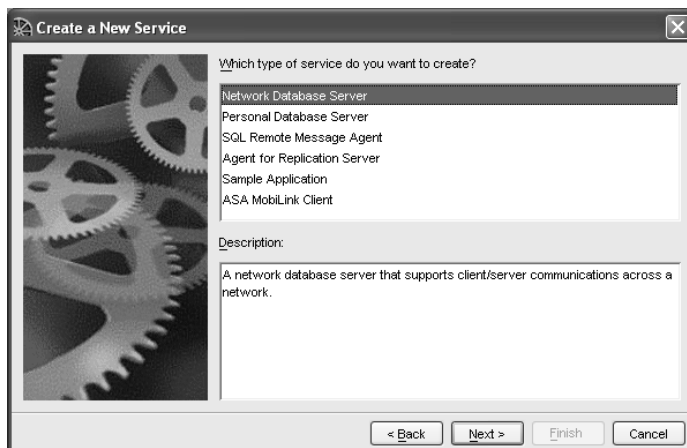


Figure 20 Create a New Service Window

- 5 Select **Network Database Server** and click **Next**.
- 6 Click **Next** to accept the default selection. You are then prompted to specify parameters for the service.
- 7 Type **-n SQLMDS c:\winomscs\data\mdsdb.db -x tcpip** and click **Next**. You are prompted to select the account under which this service runs.



Note: If the hard drive where the software is installed is represented by a different letter, substitute that letter for C.

- 8 Select **Local System Account**. Ensure that the **Allow service to interact with desktop** option is selected and click **Next**.
- 9 Select **Automatic** and click **Next**.
- 10 Click **Finish**. The **Sybase Central** window with the **SQLMDS** service is displayed.

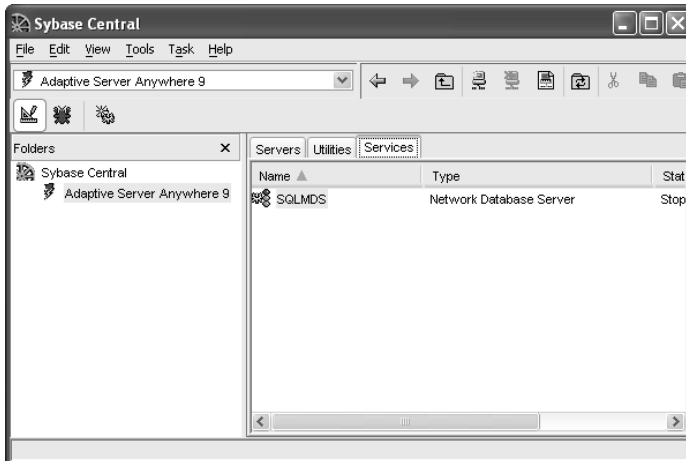


Figure 21 Sybase Central Window

- 11 To start the SQLMDS service, right-click the service and click **Start**.



Note: Installation continues automatically if you have the automatic administrator login turned on. If you are not using the automatic administrator login, you must manually log in to the computer to continue the installation.

Installing the WINOMS CS Software on a Workstation

To install the WinOMS CS software on a workstation for the first time, follow these steps:

- 1 Verify that the server is running.
- 2 Insert the WinOMS CS software DVD in the DVD drive on the workstation. The **WinOMS CS Installer Menu** is displayed.



Figure 22 WinOMS CS Installer Menu

If this window is not displayed, begin the installation by selecting **Start > Run** from the Windows taskbar and typing **D:\WinOMSIInstMenu.exe**. If your DVD drive is assigned a different letter, substitute that letter for **D**.



Note: You must complete the server installation before you can install the WinOMS CS software on a workstation.



Note: The installer checks the computer for the Microsoft .NET Framework 3.5 Service Pack 1 (SP1). If these files are present, the installation proceeds as usual. If not, the installation of SP1 proceeds automatically. After SP1 is installed, you are prompted to restart the computer. If the WinOMS CS installation does not continue after you restart, repeat Step 2.

- 3 Click **Install WinOMS CS v8.1**. The **Select Component** window is displayed.

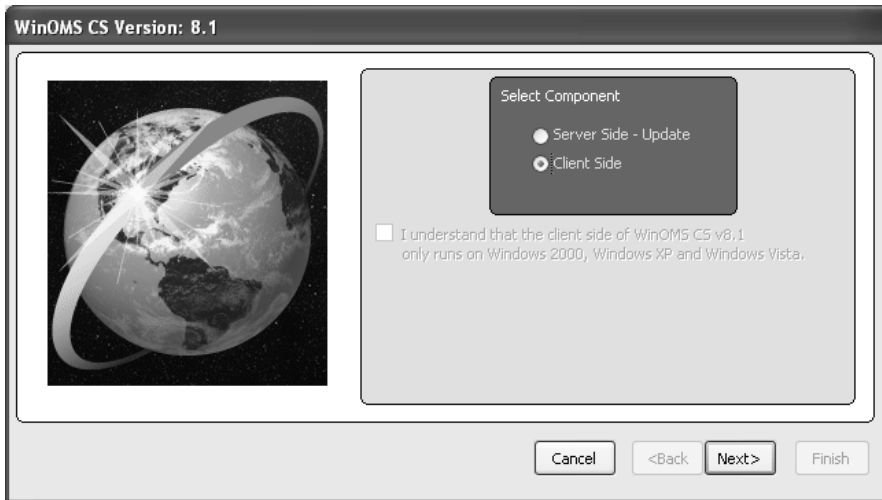


Figure 23 Select Component Window

- 4 Select **Client Side** and click **Next**. The **Target Directory** window is displayed.

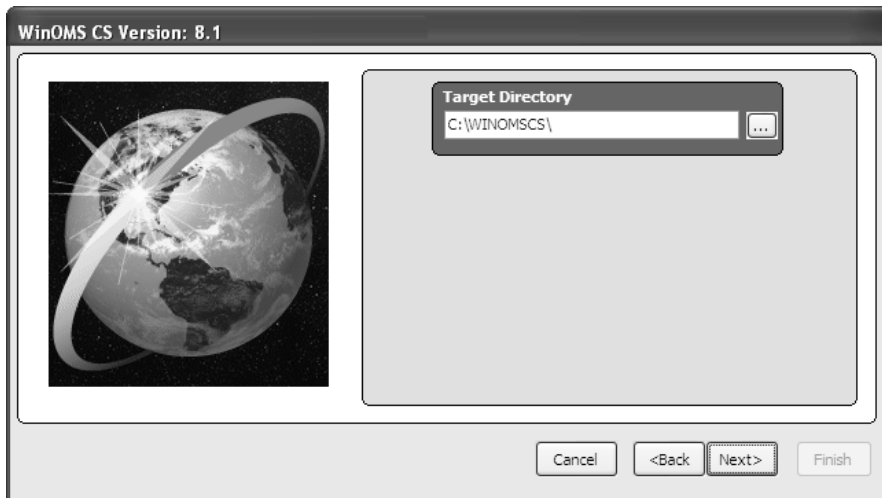


Figure 24 Target Directory Window

- 5 The target directory defaults to **C:\WINOMSCS** and should not be changed. Enter the server IP address. If you use static IP addresses on your workstation, enter the IP address of the current workstation. Click **Next**. The **WinOMS CS Version 8.1 Installation - Finish** window is displayed.



Note: If you are not using static IP addresses on your workstations, you do not have to enter the My IP or workstation IP addresses. However, you must still enter the server IP address on a workstation.

- 6 Click **Finish**. The **Sybase Client Drivers** window is displayed.
- 7 Click **Next**. The **Sybase Client Drivers - Start Installation** window is displayed.

- 8 Click **Next**. The **Sybase Client Drivers** window is displayed, informing you that the Sybase client drivers have been successfully installed.
- 9 Click **Finish**. The **Status Messages** window is displayed, indicating the progress of the installation. When the installation is complete, a message is displayed, prompting you to restart your computer.
- 10 Click **Yes** to restart your computer. The WinOMS CS software icon is displayed on your Windows desktop, confirming that the software has been installed.



Important: Repeat these steps to install the WinOMS CS software on each computer in your network.

