

Kodak Dental Systems



Innovation, in reach

9000 3D

KODAK 9000 3D Extraoral Imaging System



The future of dentistry is here



3D is here

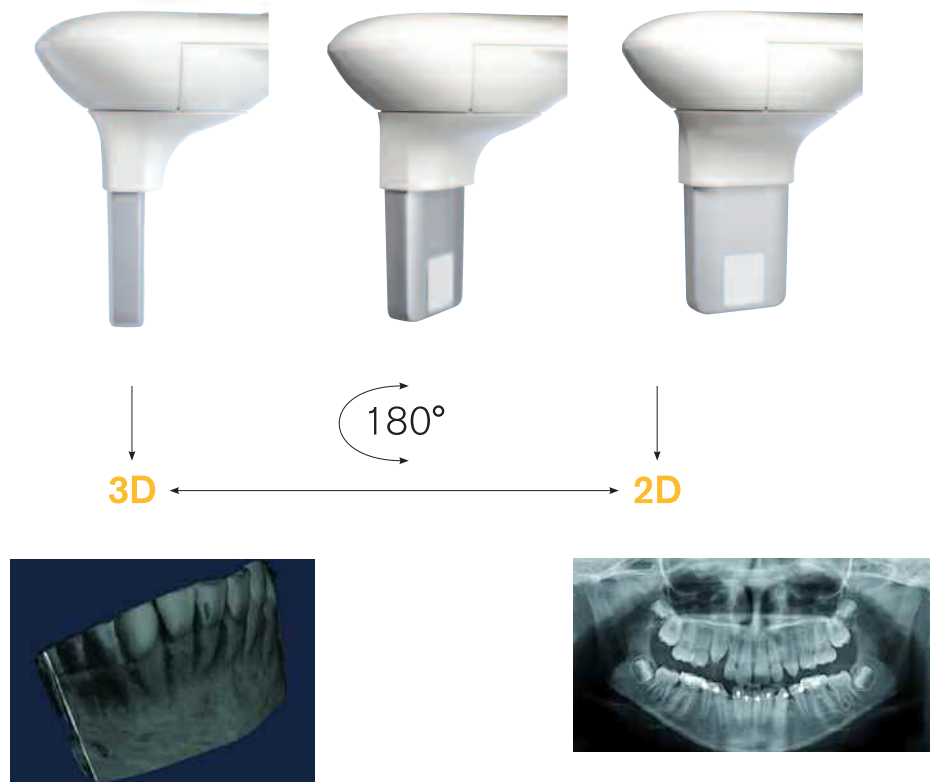
Technology in the dental marketplace has changed rapidly over the past few years. With the Kodak 9000 3D extraoral imaging system, 3D technology is now available to any dental practitioner. This new system allows you to benefit by adding the power and accuracy of 3D imaging to your practice.

3D is accessible

Our newest system is the perfect example of innovation, ease-of-use and affordability. This two-in-one solution brings powerful, focused field 3D imaging to dental professionals like never before.

3D brings possibilities

With the unprecedented detail and anatomical views that focused field 3D technology affords, you'll discover a range of new diagnostic possibilities including endodontics, implantology, as well as surgical and dental diagnostics. Designed for daily use, the Kodak 9000 3D system raises the bar for dental imaging and helps you continue to build your practice and service offerings.



Twice as effective

Two-in-one solution

One of the outstanding features of the Kodak 9000 3D system is its combination of dedicated 2D panoramic and 3D imaging technology.

Real panoramic technology

Panoramic images are typically a first step in most examinations and treatments, given their complete dentition overview. With such frequency of use, you will appreciate having quick and easy panoramic technology at your disposal.

Real 3D technology

Our 3D technology provides an extraordinary level of detail from all angles. There is no longer a need to reconstruct “best guess” mental representations of patient anatomy. This is the beauty of 3D technology: it yields anatomically correct images onscreen.

Simple sensor switching

Even with two distinct technologies together in one system, operating the unit is surprisingly simple, uncomplicated and straightforward. You select the program on your computer, and the unit automatically switches between 3D and panoramic modes. You and your staff never have to manually change the sensor.

9000 3D
KODAK 9000 3D Extraoral Imaging System



Accurate, safe and simple

Focused field of view

The Kodak 9000 3D system boasts a focused field of view for high resolution images and voxel size. This system is ideal for local dental applications and works well for most demanding procedures, such as endodontics and single implants.

Advanced safety

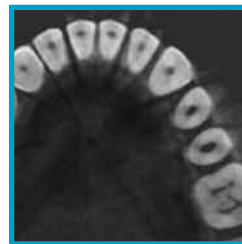
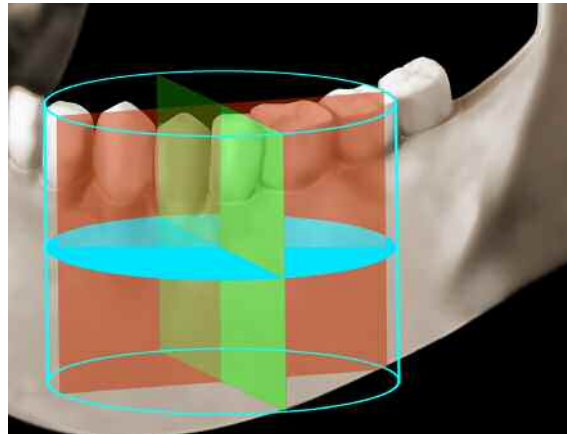
A focused field of view also reduces radiation exposure as compared with larger field 3D systems. The result gives you improved image quality and simultaneously helps you provide better patient care.

Easy to use

The Kodak 9000 3D system features a streamlined user-interface and computer controlled system. It comes with simple, integrated 3D imaging software, enhancing the complete solution.

Easy to position

In both panoramic and 3D modes, patient positioning is effortless. The comfortable and convenient face-to-face design, assisted by laser beam guides, guarantees fast and correct alignment.



Axial



Sagittal



Coronal

New, confident diagnoses

A new perspective

The Kodak 9000 3D system gives you a new way of looking at dental structures and pathologies. You get anatomically correct information along with the angles and slices you need within the volume acquired.

A new precision

With 3D imaging, you obtain precise visualization of dental structures in their actual spatial representation. You can display axial, coronal, sagittal, cross sectional and custom slices.

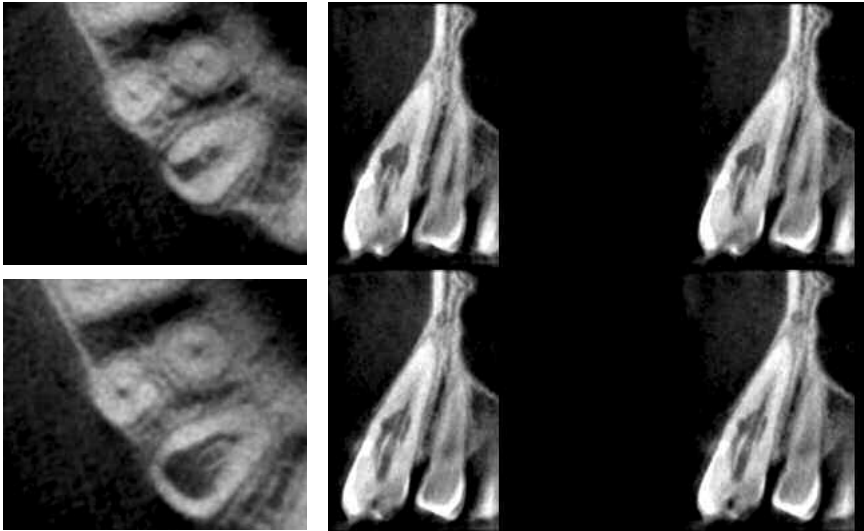
The three-dimensional reconstruction provides a reassuring “true to life” view and 1:1 measurements of dental structures for confident diagnoses.

New technology, new applications

You can use your Kodak 9000 3D system for an array of applications, including endodontics, implantology, surgery, fracture and periapical lesion assessment.

9000 3D
KODAK 9000 3D Extraoral Imaging System

Clinical cases



a

b

Degeneration of a canine

Axial (a) and sagittal (b) images show the degeneration of a lower canine with significant dentine resorption. There is a large area of radioluminescence which clearly

demonstrates the full extent of this pathological process. There is a white line around the root canal indicating additional activity within the pulpal tissue.



a

b

Implant planning

Before single implant surgery, 3D images (a) provide thorough assessment of the bone volume. A cross sectional slice template (b) can be generated automatically with an adjustable distance between slices (from 0.076 mm to 2 mm).

Easy-to-use tools allow implant dimensioning to be performed slice-by-slice, allowing you to plan for the most suitable implant in the desired region.



Simple solution, simple software

Flexible and functional software

The Kodak 9000 3D system comes with comprehensive imaging software, performing both 2D and 3D imaging. Its 3D module is versatile, simple and effective, integrating all the essential functions: measurements; multiplanar view; 3D volume view; and cross sectional slices to name just a few.

Easy sharing, easy integration

The Kodak 9000 3D system generates DICOM format images, the international standard for medical images. The system is controlled by the same Kodak imaging software used for all of our Kodak digital imaging systems. The software is easy to learn to operate and integrate into your practice. You'll save time and gain productivity.



Concentrated power

Expanding care and expanding services

By harnessing the Kodak 9000 3D system's powerful technology, you can perform a wider range of diagnoses and treatments in your office. You can reduce multiple visits and rescheduling, saving you and your patients time and money. Ultimately, the Kodak 9000 3D system delivers the possibility of exceptional improvement in your patient care and services offered.

9000 3D
KODAK 9000 3D Extraoral Imaging System

Technical specifications

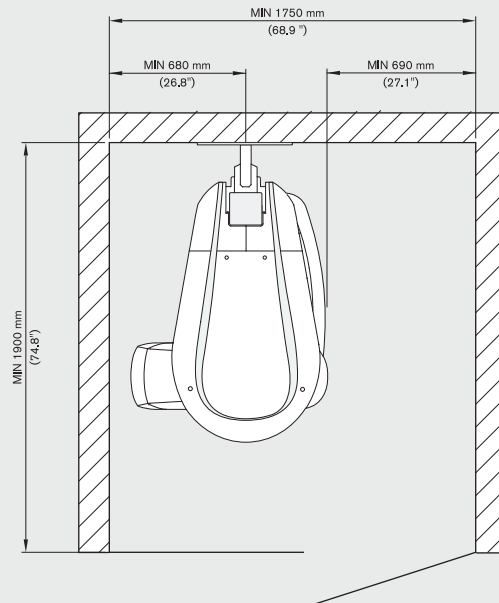
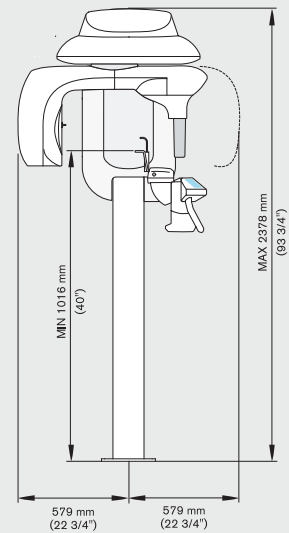
Tube voltage	60 - 90 kV (max)
	Pulsed mode for 3D modality
Tube current	2 - 15 mA (max)
Frequency	140 kHz (max)
Tube focal spot	0.5 mm (IEC 336)
Total filtration	> 2.5 mm eq. Al

3D Modality

Technology	Digital Volumetric Tomography (DVT)
Sensor technology	CMOS sensor with optical fiber
Gray scale	16384 - 14 bits
Volume size	50 x 37 mm
Voxel size	76 x 76 x 76 μ m (isotropic voxel)
Reconstruction time	Less than 2 minutes

Panoramic Modality

Sensor technology	CCD Optical fiber sensor
Gray scale	16384 (14 bits)
Magnification	1.27
Exposure time	Adult panoramic 13.9 sec. Pediatric panoramic 13.2 sec.
Programs	12 anatomical settings
Radiological exam options	<ul style="list-style-type: none"> • Panoramic • Segmented panoramic • Maxillary sinus • LA TMJ x2 • LA TMJ x4
Input voltage	• 230-240 V - 50/60 Hz
Weight	160 kg, 353 lbs



Would you like to know more?

To schedule a demonstration or to receive more information, please call: **1-800-944-6365** or visit our website:

www.kodakdental.com/go/90003D



PracticeWorks, Inc.

©PracticeWorks, Inc., 2008.
The Kodak trademark and trade dress are used under license from Kodak.