

Kodak RVG 6100

Digital Radiography System

Benefits of the Kodak RVG 6100 system over Schick CDR

It's easy to see why so many practices have made the move from Schick CDR to the Kodak RVG 6100 system. The RVG 6100 sensor's optical fiber technology, pioneered by Kodak, provides the highest resolution of any digital radiography system in the industry.

See More. Diagnose More. Produce More.

Still not convinced that resolution matters? The Kodak RVG 6100 digital radiography system is the highest resolution sensor on the dental market today. Higher resolution equates to more information, providing you with greater capabilities to analyze the images than those afforded with lower resolution images. In addition to the best image quality, our range of sensors offers you a more ergonomic design.

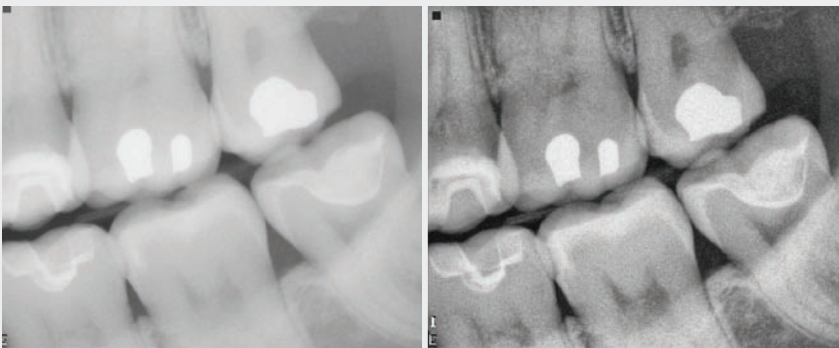
With a resolution greater than 20 lp/mm, the Kodak RVG 6100 sensor exhibits spatial resolution quality which is far superior to that of the Schick CDR image, which offers only 9 lp/mm*. The Kodak RVG 6000 series sensors provide 2.76 million pixels whereas the Schick CDS sensors offer only 576,000 pixels over a similar surface area. The Kodak RVG 6100 sensor offers 4.8 times the number of pixels, providing the detail you need to make accurate and confident diagnoses**.



Schick CDR: 9 lp/mm

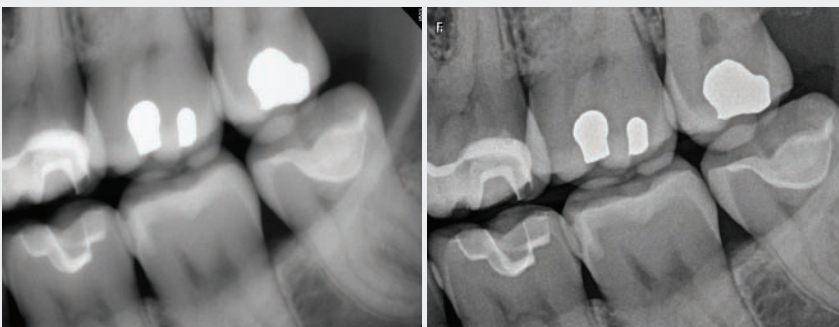


Kodak RVG 6100 system: >20 lp/mm



Left: Unfiltered Schick CDR system image.

Right: Same image with Schick Revealer filter.



Left: Unfiltered Kodak RVG 6100 system image.

Right: Same image with Kodak Dental Imaging Software sharpness filter.

Feature by Feature Comparison

	Schick CDR	Kodak RVG 6100 System	Summary
Sizes	Sensors available in Sizes 0-2, with no dose reduction on Size 0 pedo sensor	Sensors available in Sizes 0-2, with a dose reduction up to 40% on Size 0 pedo sensor	The Kodak RVG 6100 is the only true pedodontic sensor available on the market with very high sensitivity allowing up to 40% dose reduction to children. Its ergonomic design and rounded corners help with ease of positioning in children's mouths.
Active Area	Size 1 – 600mm ² Size 2 – 922mm ²	Size 1 – 660mm ² Size 2 – 972mm ²	The Size 1 Kodak RVG 6100 sensor offers 10% more active surface than the Schick sensor. This higher image area is helpful when viewing the apex on vertical endodontic images. The Size 2 RVG 6100 sensor offers 5% more active area than the Size 2 Schick sensor.
Sensor Shape	Sharp corners and edges	Rounded corners and edges	The rounded edges of the Kodak RVG 6100 make for more comfortable sensor positioning.
Resolution*	Measured 9 lp/mm resolution	Measured >20 lp/mm resolution	Due to its higher resolution, the Kodak RVG 6100 system image quality is far superior to that of the Schick CDR image.
Connectivity	USB 1 connection between the interface box and the computer	Direct USB 2 connection	The Kodak RVG 6100 sensor is a direct USB sensor, while the Schick sensor requires a bulky docking station to be used in each operatory.
Cable Attachment	Rigid cable attachment designed for ease of replacement	Robust, flexible cable attachment designed for longevity	While replacing the cable on site can be perceived as a good idea, as leading imaging providers we believe it is our duty to provide safe, reliable products to our customers that are built for longevity.
Image Filters	Revealer	Sharpness filters	An independent study showed that the Kodak RVG 6000 series sensors with contrast enhancement were superior in accuracy and acceptability when compared to the Schick CDR sensors**.
Caries Detection	None	Logicon caries detection software	Logicon software is the only software for detection of interproximal caries available in the United States.
Integration	Integration with SoftDent and PracticeWorks software via an optional bridge	Seamless integration with SoftDent and PracticeWorks software	The Kodak RVG 6100 sensor allows for "seamless integration" with Kodak SoftDent and PracticeWorks Office software. Schick requires a bridge to the software.
Conversion	Not available	Available late 2009	Currently in development, a conversion from Schick to Kodak RVG 6100 will be available late 2009. This conversion will enable you to view your existing Schick images from the Kodak dental imaging software. Conversion is limited to users of Schick software and will not be available to users of third party imaging software.

The Choice is Clear

Ready to make the move? We'll help you plan a smooth transition from Schick CDR to the Kodak RVG 6100 system, and once you're up and running, you'll find that we're there for you whenever you need help or support.

For more information, please call 800.944.6365 or visit www.kodakdental.com

*Farman AG, Farman TT. A comparison of 18 different x-ray detectors currently used in dentistry. Oral Surg Oral Med Oral Pathol Oral Radiol Endod 2005; 99: 485-9.

**Radel RT, Goodell GG, McClanahan SB, Cohen ME. In Vitro Radiographic Determination of Distances from Working Length Files to Root Ends Comparing Kodak RVG 6000, Schick CDR, and Kodak Insight Film. J Endod 2006; 32: 566-568



PracticeWorks

©PracticeWorks Systems, LLC, 2009.
RVG is a trademark of Carestream Health.
The Kodak trademark and trade dress are used under license from Kodak.

Logicon is a trademark of Northrup Grumman Corporation.