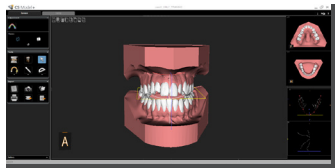


WHAT'S NEW IN CS MODEL+ VERSION 3.0

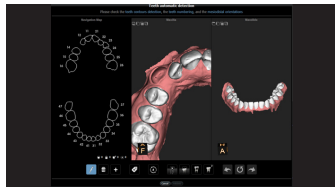


1 Larger 3D scenes and occlusal views

- Allows the practitioner to enlarge either the 3D scene or the occlusal views to full screen mode in the review tab.

Benefits

- Through the larger screen size, practitioners are better able to communicate treatment approaches with the patient.

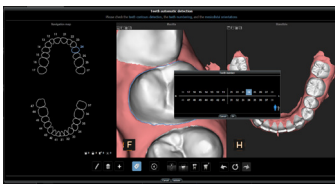


2 Semi-automatic tooth segmentation

- Eliminates the need to manually segment a tooth when it does not happen automatically. Now, the user can simply click on the tip of the tooth and it will automatically be identified and segmented.

Benefits

- This simplified tooth segmentation process saves the practitioner time.
- Even difficult full-arch cases can be segmented in less than a minute.



3 Automatic renumbering of teeth after a user update

- Allows the practitioner to easily update the tooth number when the automated result is incorrect due to missing teeth or mixed dentition.
- Allows the user to either increase or decrease the tooth number, or toggle on and off between deciduous and permanent.

Benefits

- Incorrectly identified teeth are modified with correct tooth identification, thereby streamlining the workflow.



4 New look and feel of report images

- Improves the appearance of the intraoral images that appear in the report by utilizing images extracted from the patient's actual digital model.

Benefits

- Practitioners can provide more attractive, customized reports, enhancing patient communication and colleague collaboration.

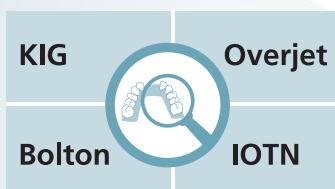


5 Redesign of the report window with expanded report options

- Better organizes the printing options and allows the user to easily expand sections to view more details.
- Practitioners can now choose to export their report in different formats, such as Adobe PDF or Excel.

Benefits

- Customization is expanded even further through more printing options.
- The report is no longer a fixed document and can be modified or inserted into a letter, practice management system document or email.

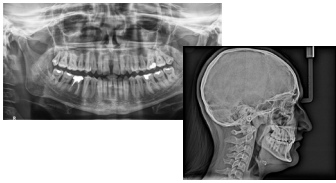


6 New analyses available

- Four analyses have been added:
 - KIG (common in Germany)
 - IOTN (common in the UK)
 - Bolton, which adds mandibular excess in mm
 - Overjet, which allows you to select your preferences for the measurement calculation

Benefits

- The practitioner can choose the analysis that best fits their current clinical workflow.

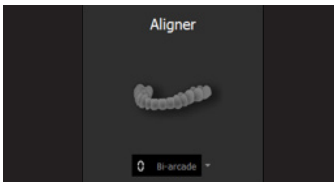


7 Ability to import panoramic and cephalometric images in the report

- Both panoramic and cephalometric images can now be imported into the report.

Benefits

- All of the patient's clinical information can now be displayed in a single report for improved usability.



8 Aligner dedicated Setup Computation

- Considers the specific constraints of aligner appliance therapy, making the proposed automatic setup closer to the desired clinical outcome.

Benefits

- The setup can be generated in approximately one minute, making this a quick and easy tool for patient communication.

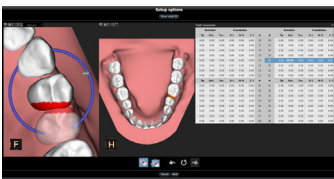


9 Direct access to manual setup

- Allows the user to bypass the automatic setup computation and proceed directly to manual setup.

Benefits

- By eliminating the need to wait for the automatic setup to complete, practitioners can save valuable time.

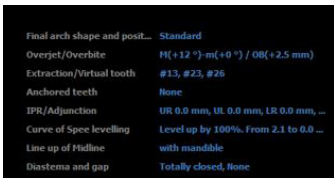


10 Simplification of manual mode

- Allows users to simplify tooth adjustment, collision adjustment and space closure thanks to the manual mode redesign.

Benefits

- The interface for manual tooth adjustment is more precise and intuitive, improving the user's experience.

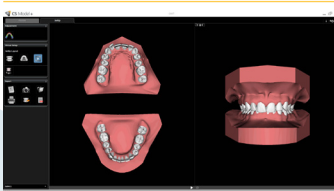


11 Redesign of the setup options window

- New setup window updates include:
 - Smoother gingival display for improved patient communication
 - Expanded feedback list, which displays all options
 - A new icon to "maintain" the incisal angulation (such as what is available for the overbite)
 - One-button selection to "keep deciduous" teeth and simulate the setup in mixed dentition cases
 - The total amount of collision is now displayed by quadrant

Benefits

- Reduced number of clicks allows users to quickly access or update patient and/or treatment information.



12 Video stops after simulation

- Video now stops at the end of the simulation Video can still be looped if needed.

Benefits

- The practitioner can explain the desired outcome to the patient without having to pause the video.