



Smop



# It's time to power up your clinical possibilities with Swissmeda from Carestream Dental.

Digital dentistry, virtual implant planning, guided surgery and assisted diagnosis continue to advance positive outcomes for doctors and patients alike. Now, Swissmeda provides easy-to-use software solutions that provides quality planning and treatment on even the most challenging All-on-X cases. Plus, make your case collaboration even smoother and improve access for your partners and referrals with in-built communication tools.

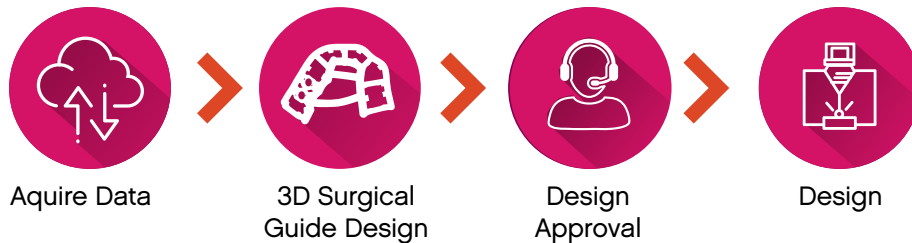
Let Swissmeda's software and data intelligence deliver more predictable outcomes and increased efficiency and profitability.

Learn more about [Smop from Swissmeda](#)

# Smop from Swissmeda

Your practice can operate in less time with more favorable results with Smop by decreasing chair time and increasing profits.

Smop, Swissmeda's industry-leading clinical software for implant cases lets dental professionals plan implants based on a CBCT scan, delivering more precise drill templates for use during implant placement. Its framework integrates cloud-based planning with a one-of-a-kind guide design to improve surgery times and patient outcomes for implant surgeries.



“

Dental implant guided surgery makes my case outcome precise, safe and easy to operate. It's also easy to prepare and plan cases without significant investment.”

**Dr. Yoko Yamada, DDS, MSD**

# Cloud-based Collaboration

The Smop planning and communication tool lets practitioners work together, improving speed, accuracy and quality of planning and collaboration on a cloud-based platform. Smop's turnkey application is the world's only implant planning system with true integration between lab and clinician; helping to significantly reduce turnaround times and safely improve accuracy.



## Innovation at Work: Patented Open Surgical Guide

The fit and function of the unique design of the open surgical guide can be immediately verified thanks to the Smop "clamp" system. During surgery, easy irrigation allows for clear visibility of the implant sites, providing improved accuracy and better placement.

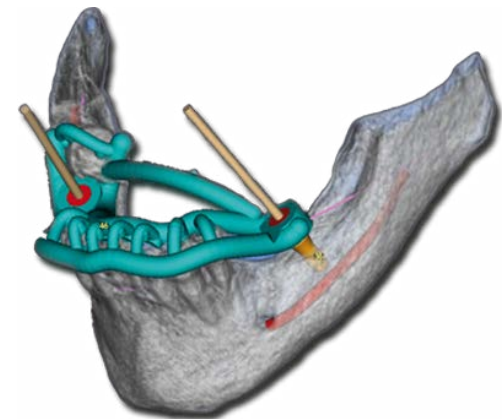


## Smart Workflow Means Better Business

Smop includes a unified communication tool to eliminate the need for third-party sharing applications. Clinicians and labs can seamlessly collaborate in app and the ability to upload all relevant case data means pertinent information is easily accessible to shared parties, for faster, clearer collaboration across teams.

## All This and So Much More:

- Dongle-free cloud application for anytime, anywhere access
- HIPAA-compliant data transfer
- All implant platforms are supported to access all file types
- Convenient, in-built messenger app for easy collaboration
- Automatic case synchronization for case management and file sharing



# Take Implant Surgery Further with Stackable Guide

When you're ready for even more complex implant cases, add on Stackable Guide, available as an addition to your Smop software or as a standalone application. New stackable guide technology includes a comprehensive digital 3D design process to create an efficient and reliable solution for complex All-on-X procedures.

## Simple Step-by-Step Workflow

Stackable Guide provides an easy guide to facilitate successful multi-stage surgeries, as intuitive as 1-2-3. With its simple, interlocking pin mechanism, open guide design and flap holders, clinicians can seamlessly perform the most challenging procedures with confidence and accuracy.

## Implant Solutions for Every Need

Smop is part of a suite of implant solutions offered by Swissmeda. Be sure to explore all Carestream Dental's implant planning portfolio can do for you, including easy collaboration tools and prosthetic-driving implant planning.

Learn more about [Stackable Guide](#)



# Implant Solutions for Every Need

Stackable Guide is part of a suite of implant solutions offered by Swissmeda. Be sure to explore all Carestream Dental's implant planning portfolio can do for you, including intuitive surgical guide design, easy collaboration tools and prosthetic-driving implant planning.

**The power of Swissmeda, advanced clinical software solutions.**

To learn more visit  
[carestreamdental.com/swissmeda](https://carestreamdental.com/swissmeda)



 **swissmeda**