

# THE VERY MODEL OF MODERN ORTHODONTICS

When combined, the CS 3600 and CS Model+ module redefine workflow—giving you a faster, more intuitive way to capture and analyze digital models so you can save time and improve case acceptance. Going digital means you can generate a complete patient model within minutes chairside, without dealing with the typical mess associated with impression capture or outsourcing to a lab. Patients will appreciate the digital impression experience, and you will gain more time to focus on your patients.

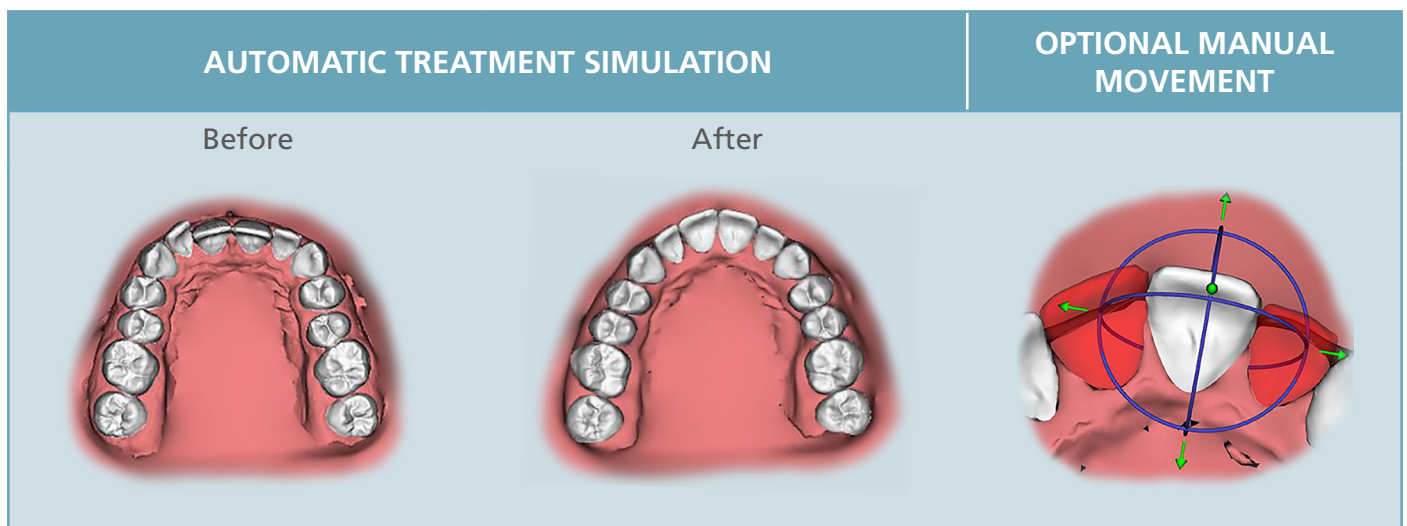
## CS 3600

- Extremely fast HD color scanning impresses patients
- Integration with CS OrthoTrac eliminates double-entry
- Direct USB makes it easy to move from office to office
- Open file system allows you to work with the lab of your choice
- Automatic generation of 2D intraoral images from 3D dataset



## CS MODEL+

- Custom orthodontic setups assist with treatment planning
- Unique automatic tooth segmentation saves time
- Treatment simulation video helps patients visualize their path forward
- Customized reports effortlessly assess case difficulty



WORKFLOW INTEGRATION | HUMANIZED TECHNOLOGY | DIAGNOSTIC EXCELLENCE

Visit [carestreamdental.com](http://carestreamdental.com) or call 800.944.6365 to speak to a Carestream Dental representative.