

# Introducing CS Imaging version 8.0.22

Date: February 10, 2023

CS Imaging 8.0.22 / CS 3D Imaging 3.10.33 / CS Imaging Suite 3.9.0

We are pleased to announce the latest features of CS Imaging version 8 which include improvements requested by our end users.



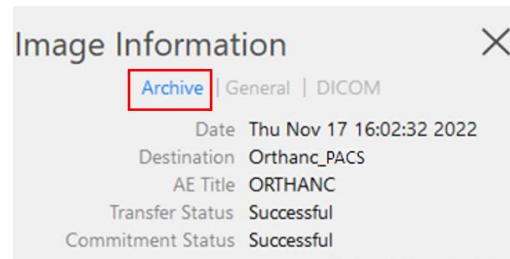
## FEATURES

### 1 Storage commitment (SC)

- SC is a confirmation from the PACS that an image has been stored reliably.

#### Workflow

- Set storage commitment in CS Monitor
- Send an image to a PACS accepting storage commitment
- Check the status of storage commitment in the image information window, menu "archive" or in the transaction log in the burger menu.

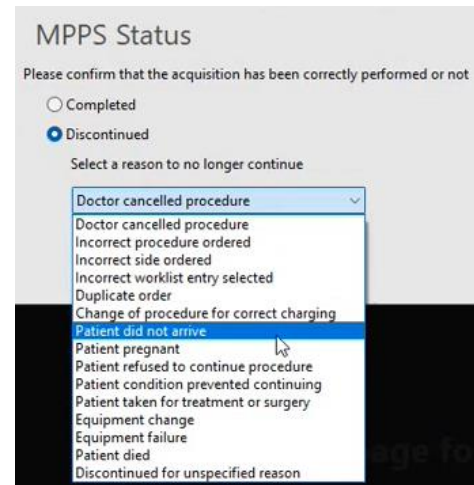


### 2 Modality Performed Procedure Step (MPPS)

- Modality Performed Procedure Step (MPPS) allows to track the acquisition process to:
  - Manage different radiology subprocesses, such as postprocessing or interpretation,
  - Inform other systems outside of the radiology department about the status of the order (e.g: billing).
- It complements the Modality Worklist, increasing the productivity in radiology department.

#### Workflow

- In CS Monitor, set a MPPS service Class server and connect the Modality Service Class server with it.
- After each 2D (panoramic or cephalometric) and 3D acquisitions, validate a MPPS message status – completed or discontinued
- Check the status of MPPS in the transaction log in the burger menu.

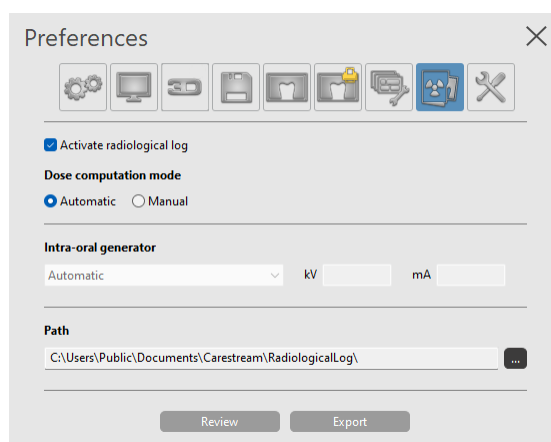


## FEATURES

### 3 Radiological log

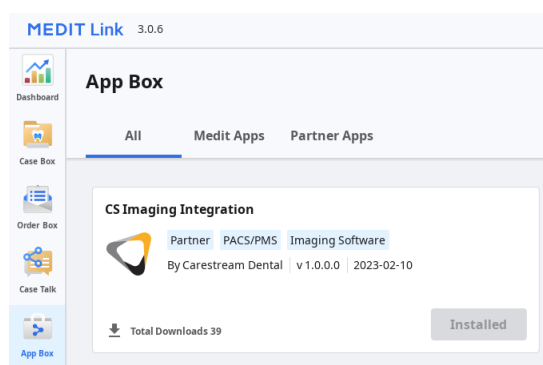
- Each X-ray dose used for acquisition can be now recorded automatically

Preferences / Radiological Log / Activate/ Automatic



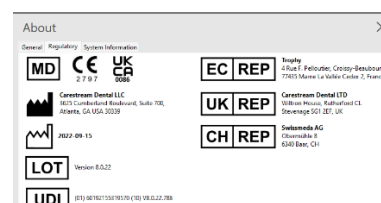
### 4 New intraoral scanner integration link for Medit

- An open solution that allows Carestream Dental software to directly connect to multiple intraoral scanners' (IOS) acquisition software.
- A CS Imaging Integration app can be installed from Medit Link, enabling a seamless, automated workflow solution in which CS Imaging 8 is leveraged as the core practice platform to drive workflow efficiency and connectivity.
- After installing this app, you can start with a patient in CS Imaging, scan a case in Medit Link and transfer back the scanned model to CS Imaging.



### 5 New European Union Medical Device Regulation (MDR)

- From this version of CS Imaging is compliant with the latest EU regulation 2017/745 on medical devices.



To learn more about the new release of CS Imaging version 8 call your Carestream Dental Sales Representative.