

# OUTSTANDING IMAGE QUALITY. RECORD-BREAKING SPEED.

## Discover the imaging system that does more

Built on the award-winning platform of the CS 8100 panoramic system, the CS 8100SC features the world's fastest cephalometric imaging technology and tracing software. With a full range of available image formats and powerful software features, the CS 8100SC is an ideal choice for everyday orthodontic and oral surgery applications.



### SCANNING IN RECORD TIME

*The CS 8100SC can scan an 18 cm x 24 cm image in as little as three seconds\*, which not only reduces the risk of motion blur, it also limits exposure time for the patient.*

### ULTRA-COMPACT, OPEN DESIGN

*One of the smallest units in its category, the CS 8100SC fits practically anywhere. The open design facilitates patient comfort and positioning flexibility.*

*"The CS 8100SC is a very quick machine. Positioning the patient to take the scan is extremely easy and straight forward. Then being able to switch between pan and ceph so simply is a real advantage. When you combine that with the interface, you've got a real time-saver."*

**DR. M. NOAM GREEN**  
DECATUR, GA.

# SOPHISTICATED—YET SIMPLE—PANORAMIC AND CEPHALOMETRIC IMAGING

Combining state-of-the-art image processing and advanced imaging technology, the CS 8100SC captures crystal-clear image in seconds. Preset orthodontic filters optimize visualization of hard and soft tissues with just one click, while the CS Adapt module enables you to customize the look and feel of your images. With two scanning modes available—as well as selectable fields of view—you can further adapt image quality and exposure area based on your diagnostic needs.

## **EXCLUSIVE AUTOMATIC TRACING**

*System software turns images into tracings in just 90 seconds. It automatically recognizes and traces anatomical structures—delivering fast results and saving valuable time.*

## **DUAL-SENSOR SYSTEMS**

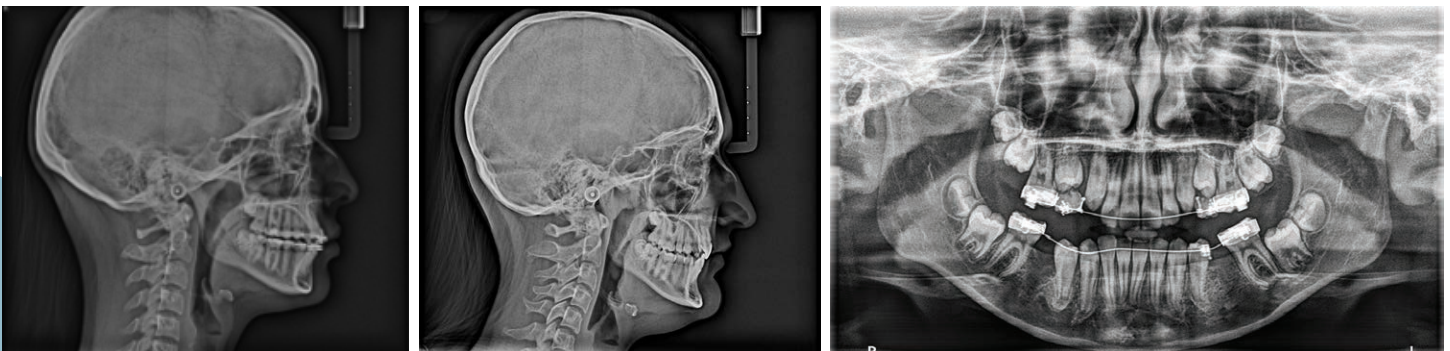
*Two sensors are better than one. That's why the CS 8100SC comes standard with dual sensors—one for panoramic and one for cephalometric. Because there's no need to change the sensor between examinations, there's little need for manipulation and less risk of damage to the unit.*

## **HIGHLY INTUITIVE USER INTERFACE**

*Simple, straightforward software makes it easy to choose the right options for the image you're about to take. Select the size of the patient and the CS 8100SC defaults to a particular setting, which you can modify in one click.*

## **PROGRAM AND IMAGE VERSATILITY**

*Multiple formats are available, satisfying most of your imaging needs: 26 cm x 24 cm; 18 cm x 24 cm; 18 cm x 18 cm.*



**CS 8100SC**

© 2019 Carestream Dental LLC. 19413 AL SS 0819.  
\*18 x 24 cm image in quick mode

[carestreamdental.com/en-sg](http://carestreamdental.com/en-sg)

[info.apac@csdental.com](mailto:info.apac@csdental.com)