



# Implant Success Is at Your Fingertips

DIGITAL IMPLANT SOLUTIONS

# Faster, More Confident Implant Planning

As a dental professional, you not only face an increasing number of patients seeking implant treatments, but nowadays patients expect the best results with shorter treatment times. This means that when it comes to your dental implant cases, predictability, accuracy and efficiency is everything.

New implant technology that inspires confidence when planning and placing implants is key to facilitating a more effective workflow. Carestream Dental's digital implant solutions has been created to simplify—not complicate—the work you do. These integrated solutions support diagnostics, treatment planning and communication to help you perform implant placement with greater assurance and precision. And now, thanks to an open architecture, our digital implant solutions work with the intraoral scanner of your choice.

Our digital solutions give you the optimal results you are looking for with faster treatments, reduced visits and increased patient satisfaction. A win-win for your practice and your patients!



## Enjoy the Benefits of a Simple, Fast and Open Solution

- Open, fully digital solution for a more effective implant workflow
- A comprehensive solution from 3D scanning to surgical guide creation
- Predictable results with reduced treatment steps and time
- Improved efficiency and collaboration across your digital workflow
- Enhanced communication, resulting in increased treatment acceptance

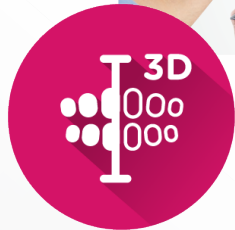


“Carestream Dental’s 3D imaging and software saves significant time... We can now immediately confirm whether or not a treatment is feasible and move to surgery—often after the first appointment.”

**Dr. Dan Delrose, D.D.S.**

# Your Implant Workflow - Simplified

When planning implants, predictability is critical. Using an intuitive digital and model-free workflow, the Prosthetic-Driven Implant Planning (PDIP) module makes implant treatments simple, faster and gives you predictability ahead of surgery. The results? More efficient treatments, improved outcomes and a better experience for your patients.

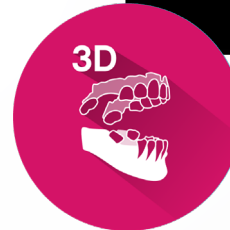


## SCAN PATIENT

It all starts with scans

At the first visit, a 360° view of bone structure and digital impressions give you a full picture of the clinical situation and help you make an accurate and safe diagnosis.

- Capture a CBCT scan using a wide range of fields of view, covering all implant indications
- Evaluate the clinical situation with a clear view of the bone volume, mandibular nerve and sinuses
- Quickly and accurately record soft tissue using the intraoral scanner of your choice



## MERGE DATA

Automatically combine and align scans

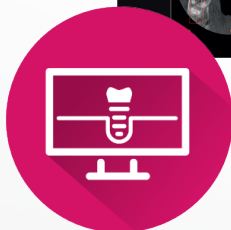
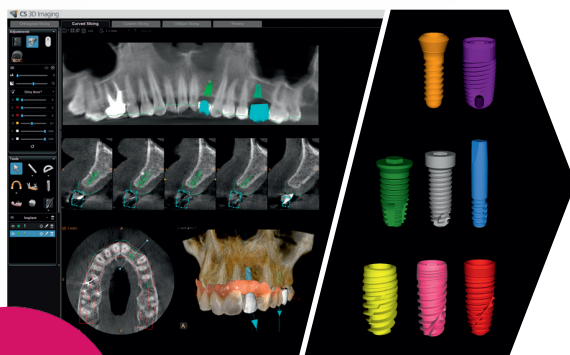
Prosthetic-Driven Implant Planning module automatically aligns the digital impression with the CBCT scan, so you can obtain the virtual setup with little to no manipulation.

- Work with open files (STL/PLY) from leading intraoral scanners
- Adjust the alignment manually if needed using intuitive tools



“In the past, we would just place the implant where there was bone. Now, we’re able to start from the prosthetic restoration and work backwards so that we have the most ideal restoration.”

Dr. Ara Nazarian, D.D.S.

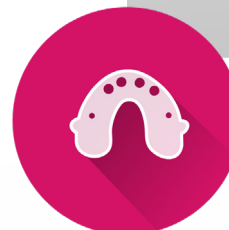
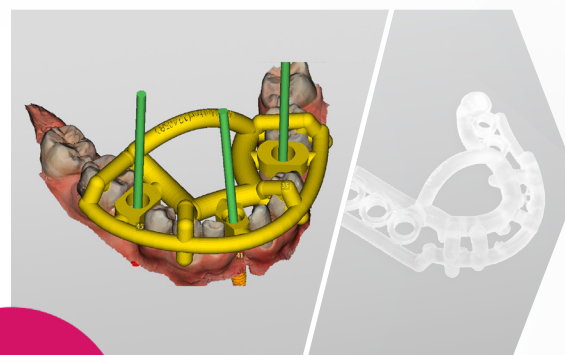


## PLAN IMPLANT

Plan implants with optimal restoration in mind

Using CS 3D Imaging software, add virtual crowns and select from a comprehensive implant library to virtually place implants in the appropriate axis and include abutments.

- Simultaneously view the location of the implant in relation to the bone and to the future restoration
- Easily find the optimal position necessary to maximize the functional and aesthetic results
- Choose implants from a library of more than 100 international and local manufacturers



## CREATE GUIDE

Prepare for surgery

Transfer the case with a single click to guided surgery software with an advanced integration, including SMOP by Swissmeda and BlueSkyBio, for guide design and fabrication.

- Export data manually to other software for surgical guide creation

### One-click implant reports

You can easily generate implant reports with a single click, helping you effectively prepare for your surgery and share information with your treatment network.

# Leave Nothing to Chance

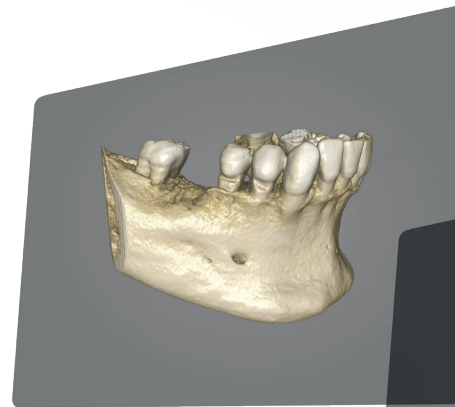
## Prosthetic-Driven Implant Planning

Planning and strategy goes a long way when it comes to implant placement and restoration. The Prosthetic-Driven Implant Planning module makes it possible to develop a restorative plan that takes into account your patients' functional requirements, anatomical constraints and a position that is ideal for future restorations. It facilitates a workflow that shifts from a solely surgical-based implant to a prosthetically driven plan. This enables you to provide faster treatments that meet the needs of your patients and further improve your implant practice and protocol possibilities.



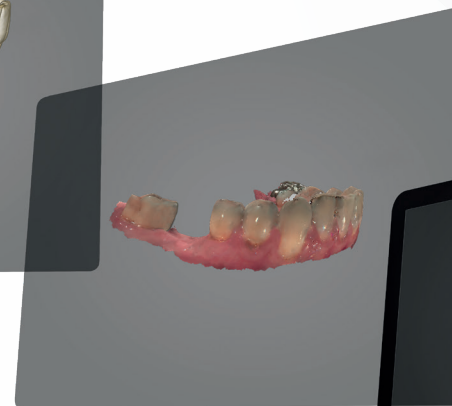
”Prosthetic-Driven Implant Planning module is an excellent educational tool. Patients can see their future crown and implant in 3D instantly—and that’s a huge ‘wow’ factor.”

**Dr. Nicolas Boutin, D.D.S.**



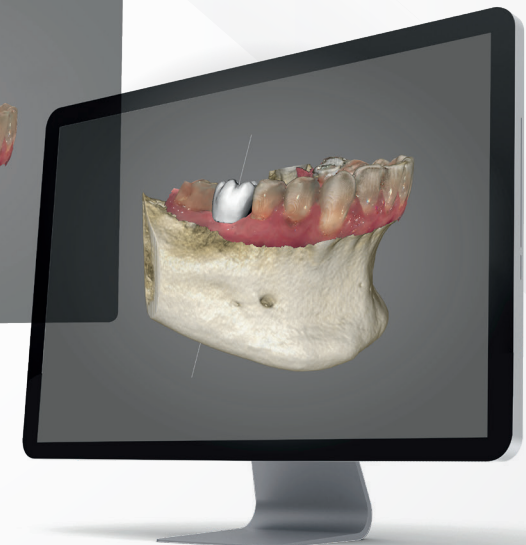
### CBCT SCAN

Take a CBCT scan to evaluate the patient bone structure



### INTRAORAL SCAN

Acquire a digital impression using an intraoral scanner



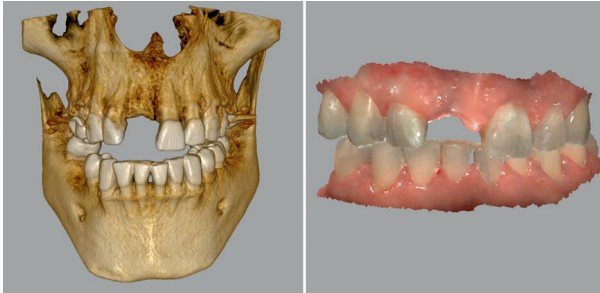
### AUTOMATIC MERGE

Automatically merge the CBCT with the digital impression data

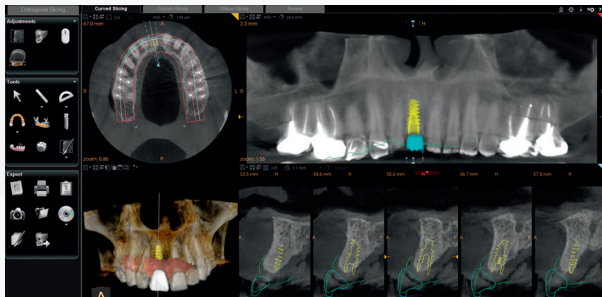
## CLINICAL CASE

# Immediate Implant Placement and Loading After Extraction In Maxillary Anterior Region

### FIRST APPOINTMENT

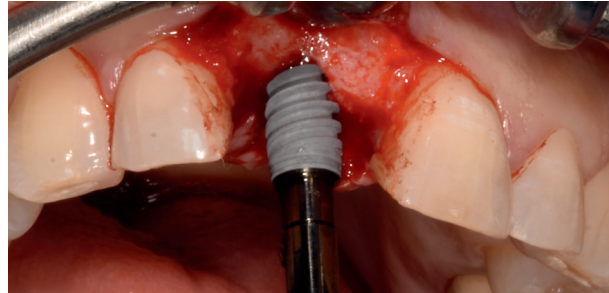


CBCT scan and digital impression are acquired

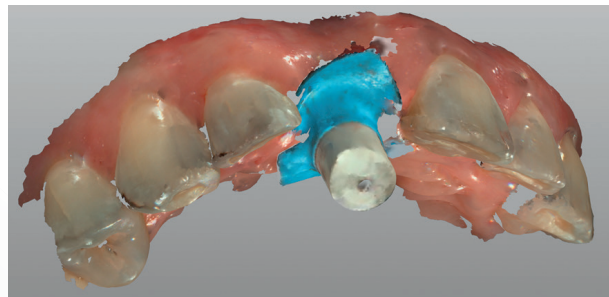


Implant is planned using CS 3D Imaging software and prosthetic-driven planning approach

### SECOND APPOINTMENT



Surgery is performed freehand



Scanbodies are placed and scanned to localize the implant position

### THIRD APPOINTMENT



Digital impression is transferred to the lab for temporary crown creation



The temporary restoration is placed into the patient's mouth

# End-to-End Solutions Through an Open Architecture

Carestream Dental's digital implant solutions cover the entire implant workflow. From diagnosis and implant planning to guided surgery—our solutions allow you to work quickly, confidently and efficiently. The open architecture of our solutions facilitates easy file sharing with referrals, third parties or your lab partners. This results in better collaboration and relationships with your treatment network.

## Imaging equipment

Capture high-quality images for implant cases using our state-of-the-art CBCT and digital X-ray systems

## Imaging software

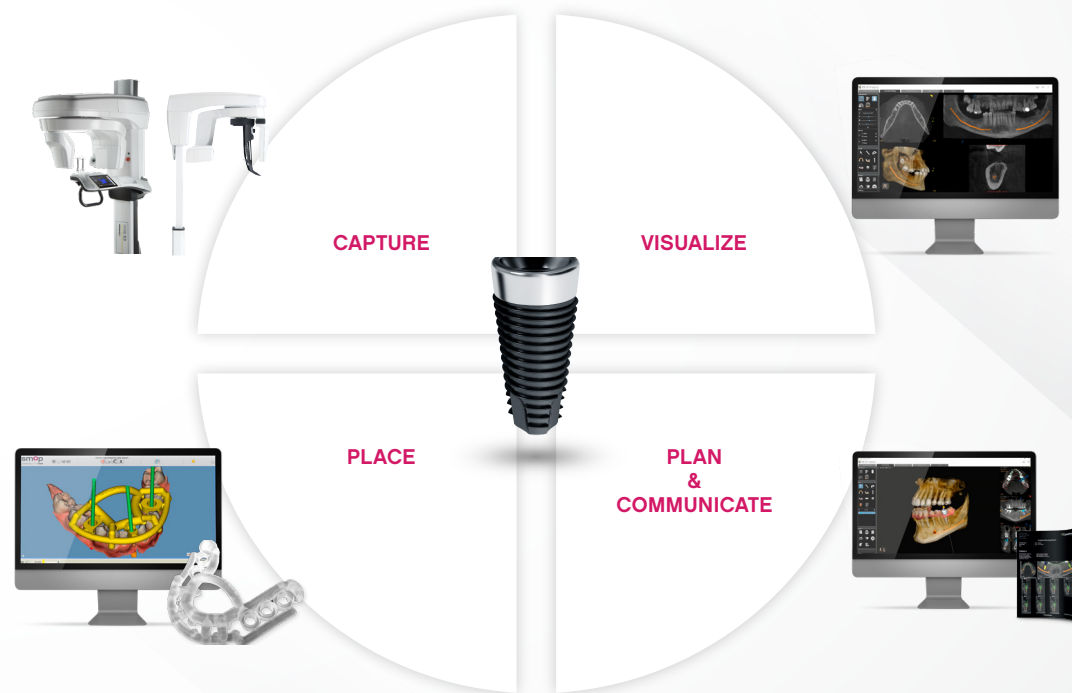
Access and analyze all your patient images effortlessly using CS Imaging software to help you make better treatment decisions

## Prosthetic-driven implant planning module

Plan implants with confidence and more effectively communicate treatment plans with your patients

## Swissmeda surgical guide

Simplify implant surgery from start to finish with this cloud-based solution that includes a high-precision drilling template



For more information, visit us at [carestreamdental.com](https://www.carestreamdental.com)